

BeautiBond™

The Power Of One Unique Chemistry



Minimally Invasive
Cosmetic Dentistry



BeautiBond™

BeautiBond is an innovative all-in-one 7th generation bonding system designed to increase efficiency and ensure a reliable bond between composite resins or GIOMER and natural tooth structure. The HEMA free formulation and incorporation of two unique adhesive monomers helps to save time, eliminate sensitivity and achieve predictable bonding with total peace of mind...

THE POWER OF ONE



UNIQUE DUAL ADHESIVE MONOMERS

Ensures a strong reliable consistent bond to both enamel and dentin

SINGLE APPLICATION

- Eliminates guess work
- Saves chair time

HEMA-FREE FORMULATION

- Eliminates post-operative sensitivity
- Provides stable & durable bond
- Minimized gingival blanching

PREDICTABILITY EVEN WITH A THIN BONDING LAYER

- Thin bubble-free bonding layer of 5µm
- Facilitates easy adaptation of restorative

CONVENIENCE

Available in Unit Dose or Bottle

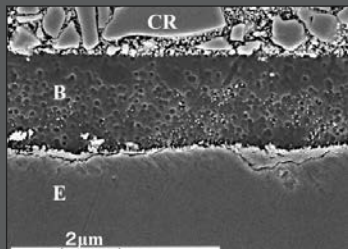


SCIENCE BEHIND THE BOND

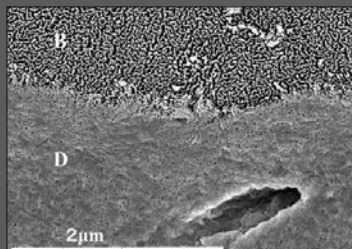
Two Powerful Adhesive Monomers

The dual adhesive monomers deliver almost equal bond strength to both enamel and dentin. The phosphonic acid monomer of **BeautiBond** is more stable than phosphoric acid monomer which enhances bonding to tooth enamel. The carboxylic acid monomer facilitates a strong bond to dentin.

SEM photographs courtesy of Dr. Toshimoto Yamada.



Enamel Bonding Interface



Dentin Bonding Interface

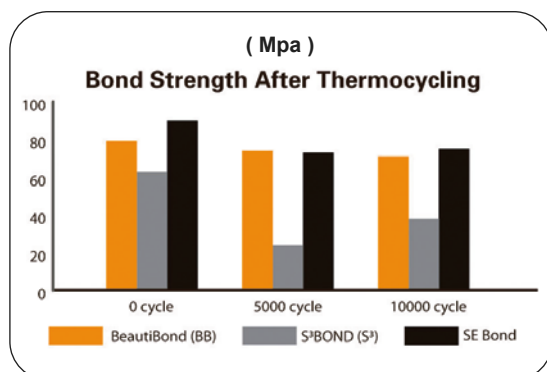
E – Enamel
D – Dentin
B – **BeautiBond**
CR – Composite Resin

Virtually No Post-Operative Sensitivity

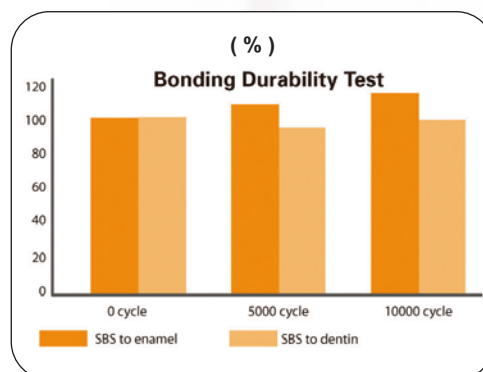
The carboxylic acid monomer in **BeautiBond** helps demineralise the smear layer without exposing the dentinal tubules which virtually eliminates post-operative sensitivity.

Stable & Durable Bond

The HEMA-free formulation prevents aging caused by hydrolysis of the hybrid layer and adhesive layer to guarantee a stable bond with outstanding bonding durability.



Source – "Micro-tensile bond strength of one, two-step self-etching adhesives using novel thermal cycling method". Kawamoto Chiharu, Nagano Futami, Yasumoto Kei, Sano Hidehiko; Graduate School of Dental Medicine, Hokkaido University, Sapporo, Japan. "3rd International Congress on Adhesive Dentistry 2008".



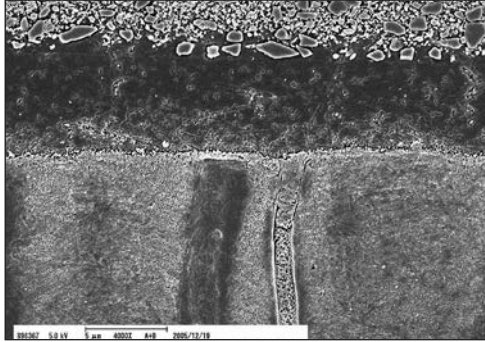
Source – Internal data by SHOFU INC Japan.



CONVENIENCE & PREDICTABILITY

Thin Bonding Layer

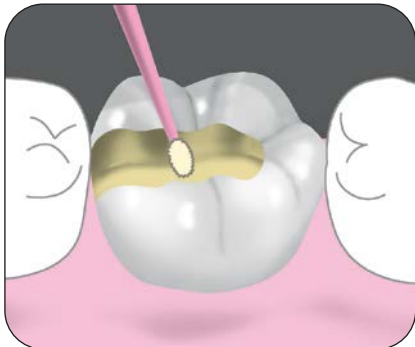
The novel adhesive technology of **BeautiBond** creates a very thin bubble-free bonding layer of 5µm that helps to facilitate easy application of the first layer of the restorative material.



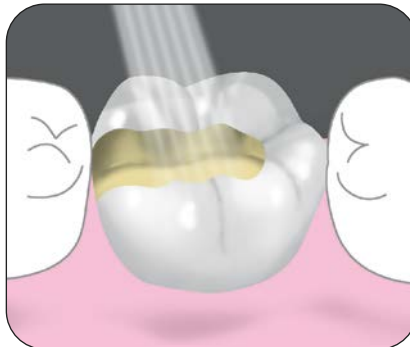
SEM photograph courtesy of Dr. Naotake Akimoto.

Simple Application

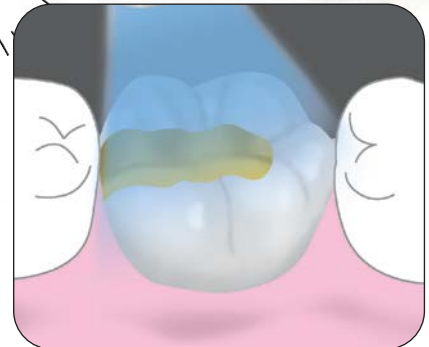
Etch, prime and bond in **just 30 seconds** with a single application and be assured of a reliable, strong bond to both enamel and dentin.



Apply **BeautiBond** (5 sec).
Leave undisturbed for 10sec.



Air-dry for 5sec to evaporate water and volatile components.
(Gently air-dry for 3sec then air-dry with high pressure for 2sec)



Light-Cure (Halogen: 10sec /
LED: 5 sec).

Guaranteed Results

Photographs courtesy of Dr. Sushil Koirala.



Prepared cavity.



Application of **BeautiBond**.



Air-dried and light-cured.



Completed restoration with **BEAUTIFIL II**.



Order Information



BEAUTIBOND SET [REF 1781]
BeautiBond 6ml bottle, Microtip Fine (with 1 handle) x 50 application tips, V-Dish x 25

Related Products



BEAUTIFIL II 6 COLOR SET
6 x Beautifil II Syringe, 4.5g – A2, A3, A3.5, B2, A3O, Inc, Dura-White Stone, Super-Snap Singles, OneGloss Trial Set & Paper Pad



BEAUTIFIL II LS (4g)
Shades: A1, A2, A3, A3.5, A4, B1, B2, B3, C2, C3, A2O, A3O, INC, BW



BEAUTIFIL II REFILLS (4.5g)
Shades: A1, A2, A3, A3.5, A4, B1, B2, B3, C2, C3, Inc, BW, A2O, A3O



BEAUTIFIL OPAQUER
(2g with needles tips x 5)
Shades: UO (Universal), LO (Light)



BEAUTIFIL INJECTABLE X/XSL
(2.2g)



BEAUTIFIL FLOW – F10
F02 – High Flow (2g with needles tips x 5)
Shades: A1, A2, A3, A3.5, A4, A3O, A3T



Official Partner



SHOFU DENTAL ASIA-PACIFIC PTE. LTD.

1 Science Park Road, #01-01 / 02 The Capricorn, Singapore Science Park II,
Singapore 117528 Tel: (65) 6377 2722
eMail: mailbx@shofu.com.sg www.shofu.com.sg



BB20240606