

BEAUTIFIL Flow Plus

Injectable Hybrid Restorative Material



BEAUTIFIL Flow Plus

BEAUTIFIL Flow Plus, a novel injectable hybrid direct restorative of the 2nd generation GIOMER family, breaks new ground in direct restorative dentistry with its superior physical and mechanical properties for successful posterior as well as anterior application.

This unique formulation represented in two discrete viscosities features exceptional strength, life-like aesthetics with optimal handling characteristics and continuous fluoride protection for predictable, long-lasting restorations.

***Created with the strength of a hybrid,
delivery like a flow***

F03

Medium Viscosity (3mm)

Exhibits moderate flow to restore pits, gingival boxes, for surface modification and apply as a base.



F00

High Viscosity (0mm)

Flows on command with exceptional sculptability for effortless shaping of occlusal anatomy, marginal ridges and intricate surface details.

Indications

- Restoration of
 - *minimally invasive anterior and posterior cavities*
 - *Class I through Class V cavities*
 - *Deciduous teeth*
- Effortless sculpting of detailed cuspal and occlusal anatomy
- Creation of marginal ridge in a Class II cavity
- Repairing composite or ceramic restorations
- Shade adjustment and modification of direct and indirect restorations

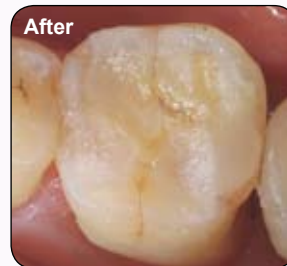
Clinical Application

CASE I – Restoration of Class I Cavity



Photographs courtesy of Dr. Ken Kobayashi

CASE II – Recreating Cuspal Anatomy of an Abraded Molar



Creating Marginal Ridge

Sculpting of Cusp Anatomy

Final Restoration

Photographs courtesy of Dr. Sushil Koirala








Special Features

Natural Aesthetics with Superb Polish

BEAUTIFIL Flow Plus exhibits life-like aesthetics by mimicking the optical characteristics of natural enamel (light transmission) and dentin (light diffusion within the material). The basic shades have been optimized to exhibit a “chameleon effect” as they harmonize with the surrounding tooth structure without influence from the background.

BEAUTIFIL Flow Plus has the same proven predictable aesthetic qualities and shade match as **BEAUTIFIL II** and **BEAUTIFIL Flow** for a complimentary application especially in high end aesthetic cases.

BFF Plus		BFF		BF II
F00	F03	F02	F10	
A3	A3	A3	A3	A3
				

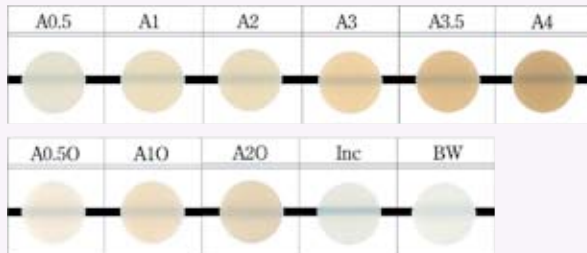
The unique balance of resin and filler distribution ensures excellent polish retained over time for a lasting enamel-like lustre.

Stable Shade Spectrum

BEAUTIFIL Flow Plus features a range of basic and effect shades to provide individualized aesthetics.

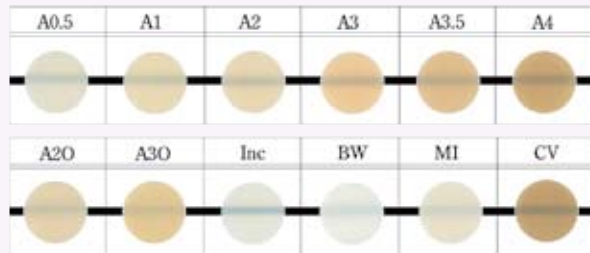
BEAUTIFIL Flow Plus F00 – 11 shades

A0.5, A1, A2, A3, A3.5, A4, A0.5O (Opacious Dentin A0.5), A1O (Opacious Dentin A1), A2O (Opacious Dentin A2), INC (Enamel), BW (Bleach White)



BEAUTIFIL Flow Plus F03 – 12 shades

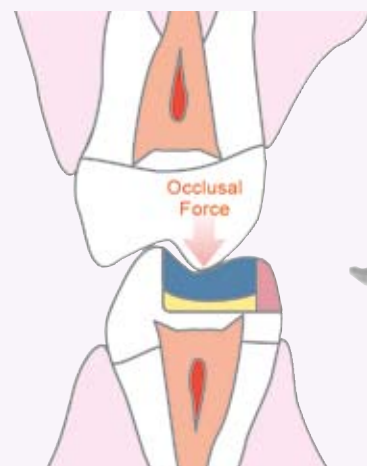
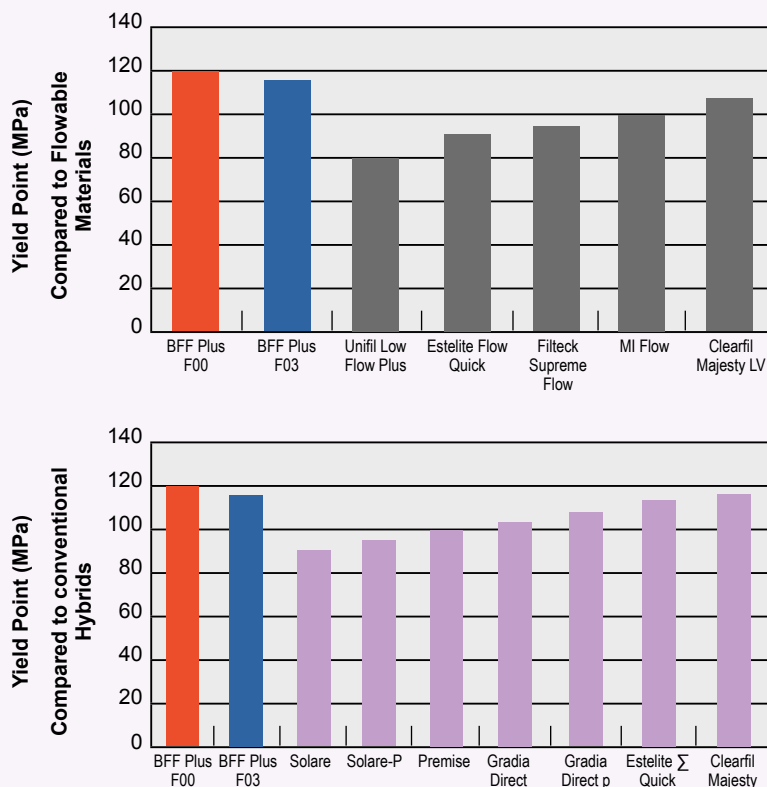
A0.5, A1, A2, A3, A3.5, A4, A2O (Opacious Dentin A2), A3O (Opacious Dentin A3), INC (Enamel), BW (Bleach White), MI (Milky), CV (Cervical)



Enhanced Physical Properties

BEAUTIFIL Flow Plus exhibits superior flexural strength, exceptional wear resistance and high load threshold unlike a conventional flow.

The highly strengthened resin matrix and densely packed filler complex impart exceptionally high physical and mechanical properties for a predictable application even in load bearing posterior restorations in harmony with conventional hybrids.



High Endurance to occlusal force.



Exceptional Handling Characteristics

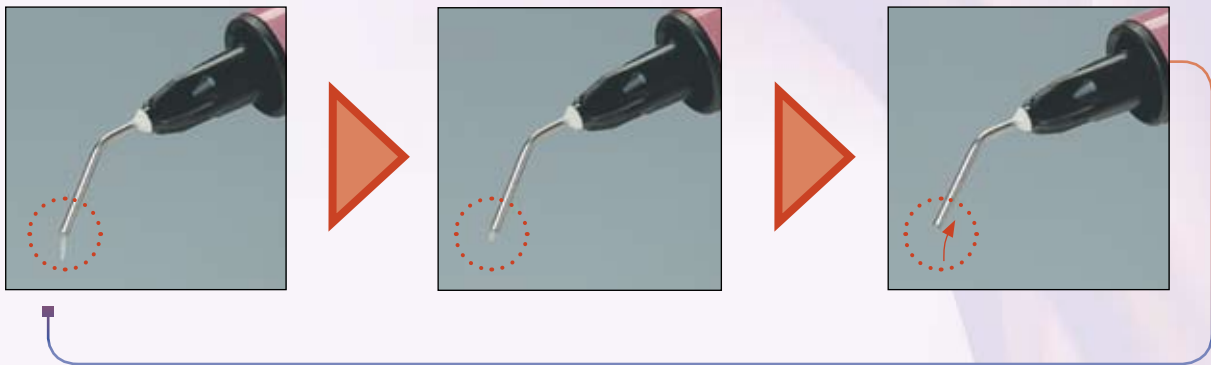
The 2 distinct viscosities **BEAUTIFIL Flow Plus F00** and **F03** enable effective application in a variety of clinical cases.

Flow on Command

Despite its high viscosity, **BEAUTIFIL Flow Plus F00** is easy to dispense without any drag, can be stacked and effortlessly sculpted to perfection.

Unique Syringe Design

Clinical application is further enhanced with a secure pull-back mechanism for easy dispensing and retrieval of excess material. A Multipurpose Rubber Shield Cap provides suitable cover during multiple restorations while the 360° colour coded Rotary Grip enables multi-directional application even in hard to reach areas.



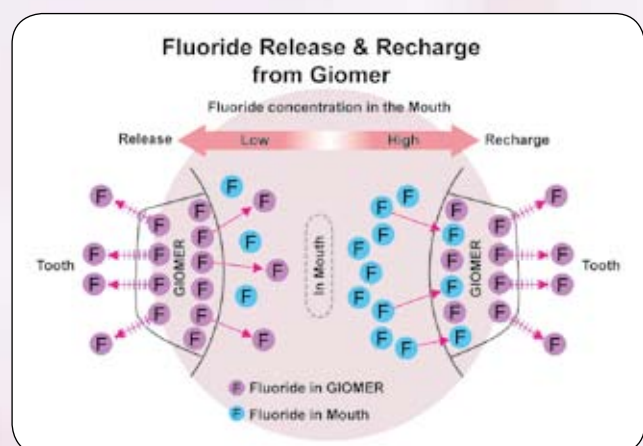
Remarkable Radiopacity

Radiopacity in a restorative material helps to evaluate restoration integrity and diagnose possible secondary infection. **BEAUTIFIL Flow Plus** exhibits remarkable radiopacity values of 2.3 Al:mm for ease of radiographic diagnosis.



Sustained Caries Protection

BEAUTIFIL Flow Plus has stable S-PRG fillers that are reported to exhibit an anti-plaque effect while enabling fluoride release and recharge in response to fluoride concentration in the oral environment for continuous protection against bacterial colonization.



Order Information



BEAUTIFIL Flow Plus F00
High Viscosity 2.2gm, Needle Tips x 5pcs



BEAUTIFIL Flow Plus F03
Medium Viscosity 2.2gm, Needle Tips x 5pcs

Related Products



BEAUTIFIL II 6 Color Set [PN 1775]



BEAUTIFIL II Cosmetic Kit [PN 1777]



FL-BOND II Complete Set [PN 1306]



Super-Snap Rainbow Set [PN 0500]



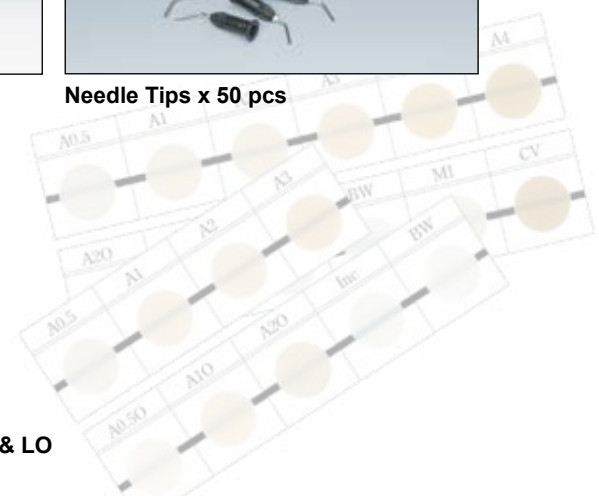
OneGloss Set [PN 0180]



Needle Tips x 50 pcs



BEAUTIFIL Flow F02 & F10
BEAUTIFIL OPAQUER – UO & LO



SHOFU INC. 11 Kamitakamatsu-cho, Fukuine, Higashiyama-ku, Kyoto 605 - 0983, Japan (www.shofu.co.jp)
 SHOFU DENTAL ASIA-PACIFIC PTE. LTD. 10 Science Park Road, #03-12 The Alpha, Science Park II, Singapore 117684 (www.shofu.com.sg)
 SHOFU DENTAL SUPPLIES (SHANGHAI) CO. LTD. No.645 Jiye Road, Sheshan Industry Park Songjiang Shanghai 201602, China (www.shofu.com.cn)
 SHOFU DENTAL CORPORATION 1225 Stone Drive, San Marcos, CA 92078-4059, USA (www.shofu.com)
 SHOFU DENTAL GmbH Am Brüll 17, 40878 Ratingen, Germany (www.shofu.de)
 SHOFU UK. Riverside House, River Lawn Road, Tonbridge, Kent TN9 1EP, United Kingdom (www.shofu.co.uk)
 SHOFU is a registered trademark of SHOFU INC. All other trademarks and registered trademarks are the property of their respective holders. SHOFU INC. reserves the right to change specifications without notice.
 © Copyright 2001 SHOFU INC. All rights reserved.