

COAT-IT

Light Cured Resin Coat



COAT-IT

SHOFU COAT-IT is a light-cured self-adhesive resin coat designed to provide a perfect protective seal on the surface of Glass Ionomers for enhanced mechanical properties, durability and aesthetics of the restoration. All it takes is a thin layer of **COAT-IT** to significantly decrease the surface roughness on the Glass Ionomer restoration.

Benefits

Remarkable Surface Gloss

COAT-IT is easily and completely cured to a natural gloss with both LED and Halogen light curing sources within 10 seconds, leaving very little residual uncured monomer.

Exceptionally Strong Bond

COAT-IT exhibits an equally strong adhesion to different substrates such as Enamel, Dentin and GIC, with virtually no gap, even when observed under high magnification.

Order Information



COAT-IT [PN Y0055]

Related Products

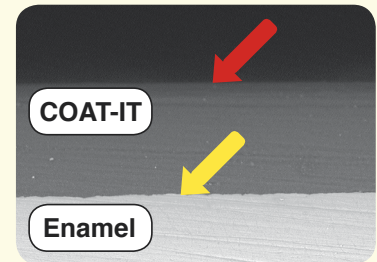


Glaslonomer FX Ultra 1-1 Set

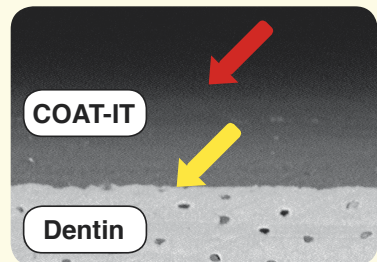


Zirconomer Improved [PN 3130]

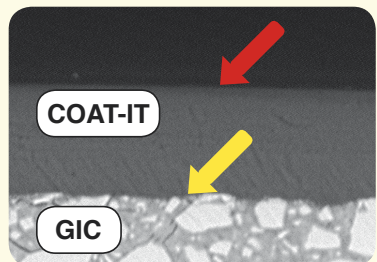
SEAL & PROTECT



A) Adhesive interface between COAT-IT and Enamel



B) Adhesive interface between COAT-IT and Dentin Enamel



C) Adhesive interface between COAT-IT and GIC (Glaslonomer FX Ultra)



SHOFU INC. 11 Kamitakamatsu-cho, Fukuine, Higashiyama-ku, Kyoto 605 - 0983, Japan (www.shofu.co.jp)
SHOFU DENTAL ASIA-PACIFIC PTE. LTD. 10 Science Park Road, #03-12 The Alpha, Science Park II, Singapore 117684 (www.shofu.com.sg)
SHOFU DENTAL TRADING (SHANGHAI) CO. LTD. No.645 Jiye Road, Sheshan Industry Park Songjiang Shanghai 201602, China (www.shofu.com.cn)
SHOFU DENTAL CORPORATION 1225 Stone Drive, San Marcos, CA 92078-4059, USA (www.shofu.com)
SHOFU DENTAL GmbH Am Brüll 17, 40878 Ratingen, Germany (www.shofu.de)
SHOFU UK. Riverside House, River Lawn Road, Tonbridge, Kent TN9 1EP, United Kingdom (www.shofu.co.uk)