

PRG Barrier Coat

BioSmart Light-Cure Protective Shield



PRG
Technology
Giomer
Smart Prevention



PRG Barrier Coat

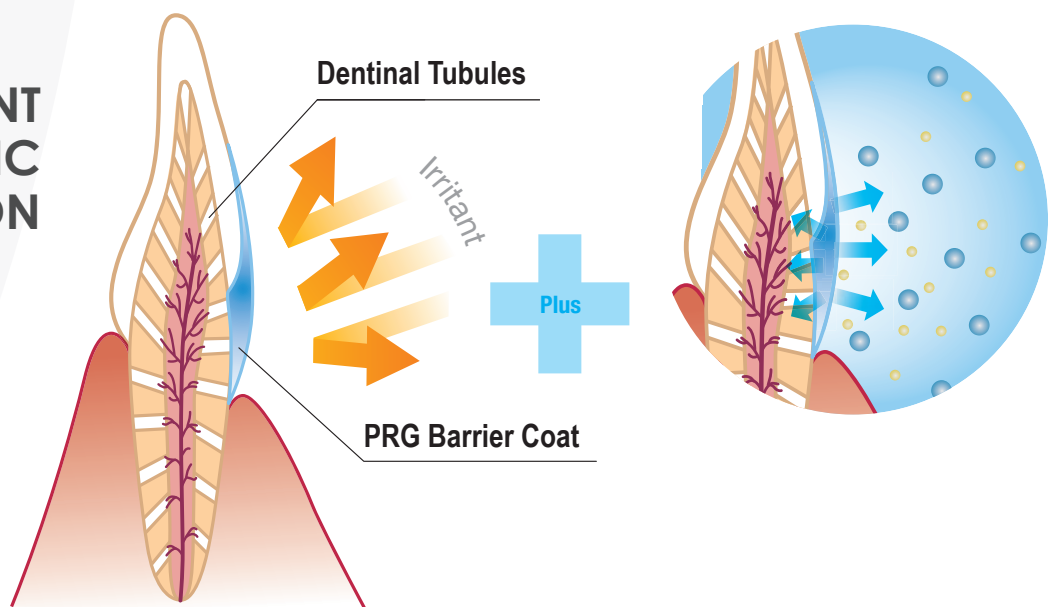
BioSmart Light-Cure Protective Shield



PRG Barrier Coat with the patented Bioactive S-PRG technology offers a smart solution to revolutionize your prevention protocol.

“ **ONE** INVISIBLE APPLICATION (15 micron) **TWO KEY BENEFITS** ”

**PATIENT
CENTRIC
PREVENTION**



Seal

**against dentin
hypersensitivity**

*Increase Patient comfort and
improve quality of life*

&

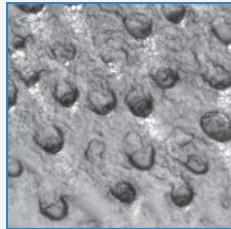
Protect

**against
caries**

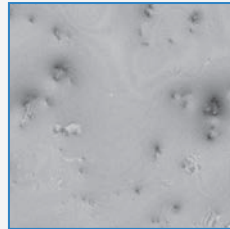
*Effective prevention and
management of dental caries*

Immediate & Lasting Hypersensitivity Relief

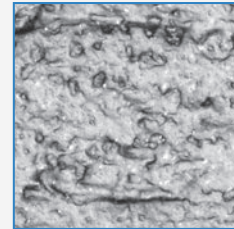
A single application of **PRG Barrier Coat** occludes exposed dentin tubules to provide immediate and lasting dentin hypersensitivity relief for up to 6 months. The durable coat protects teeth from external irritants and exhibits resistance to daily toothbrushing.



Open dentin tubules before application

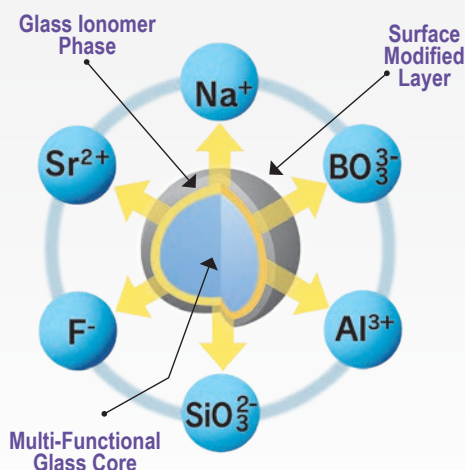


Sealed after PRG Barrier Coat application



Dentin tubules remain sealed after brushing the tooth 2000 times

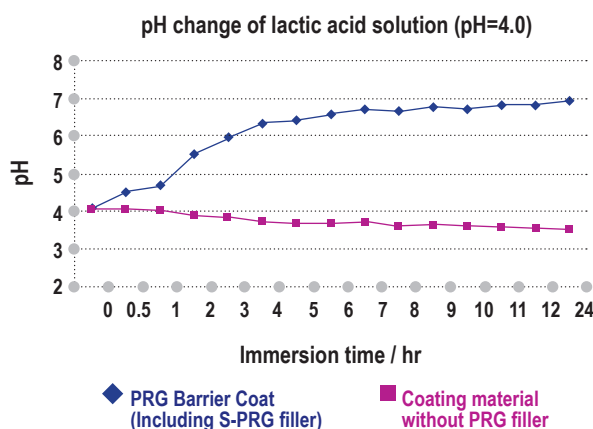
Protect against Caries



PRG Barrier Coat is based on the proprietary Giomer concept which incorporates the patented bioactive S-PRG (Surface Pre-Reacted Glass ionomer) filler technology, where a unique combination of six beneficial ions are actively released to provide multiple anti caries benefits¹

- Acid buffer effect
 - neutralize pH in the oral environment
- Reduce cariogenic bacteria
- Prevent plaque adherence
 - minimize biofilm formation
- Promote remineralization
 - strengthen tooth surface
- Fluoride release and recharge

Comparison of PRG Barrier Coat & varnish without S-PRG Filler



Neutralize pH in the Oral Environment

This unique surface coat releases multiple ions that protect the tooth surface by neutralizing the acidic conditions produced by cariogenic bacteria² to provide an acid buffer effect.

The bioactive property of PRG Barrier Coat helps enhance the anti caries benefit compared to conventional varnish.

References:

1. Gordan VV, Blaser PK, Watson RE, et al. A clinical evaluation of a giomer restorative system containing surface prereacted glass ionomer filler: results from a 13-year recall examination. J Am Dent Assoc. 2014;145(10):1036-1043.
2. Kaga M, Kakuda S et al. Inhibition of enamel demineralization by buffering effect of S-PRG filler-containing dental sealant: Eur J Oral Sci. 2014 Feb;122(1):78-83

Manage Dentin Hypersensitivity

Exposed root due to Gingival Recession or tooth wear due to Erosion / Abrasion / Attrition / Abfraction



Gingival Recession



Attrition



Tooth Erosion



Cervical Abrasion

VARIETY OF CLINICAL APPLICATIONS

Prevent and Manage Dental Caries

White spot initial lesions, around orthodontic brackets, exposed root surface, newly erupted molars and hard to clean areas of crowded teeth etc...



Newly erupted permanent teeth



Exposed root surfaces



Area around orthodontic brackets



Interproximal contact areas in crowded teeth



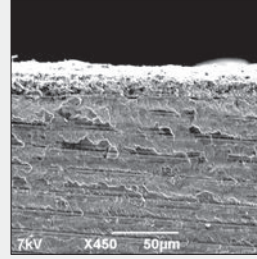
Early caries lesions (white spots)



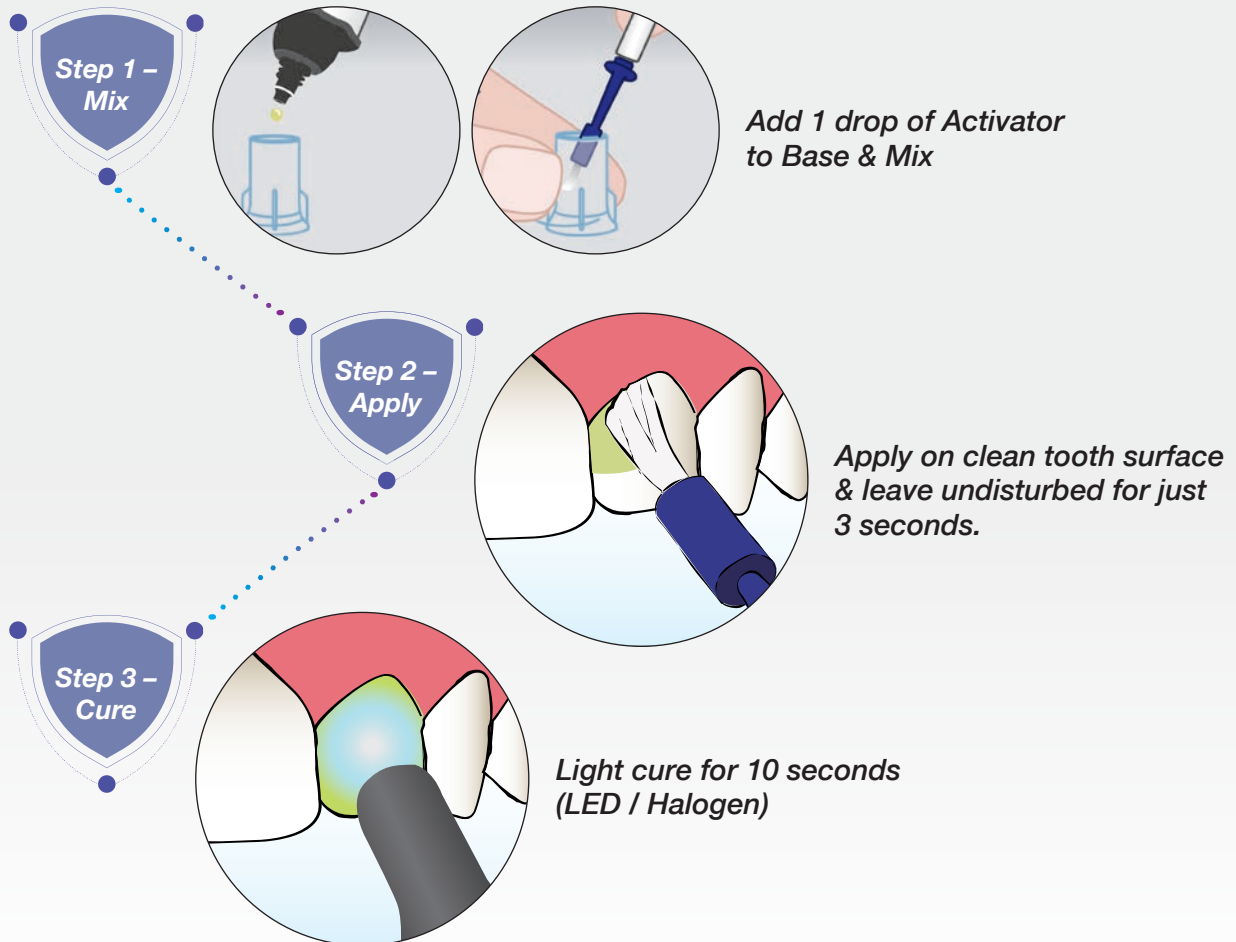
Teeth with clasps of removal partial dentures

Simplified Clinical Procedure

- Fast & Easy Application
- Invisible, 15µ thin for better aesthetics
- Excellent self-adhesive properties
- Durable for prolonged protection
- HEMA-free, Acetone-free, and Alcohol-free



Invisible layer for enhanced aesthetics



User Reviews

“PRG Barrier Coat provides me with a simple long term solution for dentin hypersensitivity as well as prolonged protection in high caries risk areas. And all this with Shofu’s proven Giomer technology!”

*Fay Goldstep, DDS, FACD, FADI, FADFE
Toronto, Canada*

*Dr. Fenella Isabel G Piedad, DMD
Pediatric Dentistry Centre, Philippines*

“PRG Barrier Coat is a more definitive treatment for demineralized enamel on smooth surfaces. The ease of use and reliable retention makes it my choice for arresting White Spot lesions.”

Order Information



PRG Barrier Coat Mini-Kit [REF 1786]

Base 0.02mL x 8pcs, Active 0.9mL
Disposable brush x 8, Holder x 1

Related Products



BeautiSealant System [REF 1798]

BeautiSealant Paste 1.2g, BeautiSealant Primer 3mL,
Needle Tips x 15, Microbrush Fine (pink) x 50, V-Dish x 25



SHOFU DENTAL ASIA-PACIFIC PTE. LTD.

1 Science Park Road, #01-01 / 02 The Capricorn, Singapore Science Park II,
Singapore 117528 Tel: (65) 6377 2722
eMail: mailbx@shofu.com.sg www.shofu.com.sg



PRG202030930