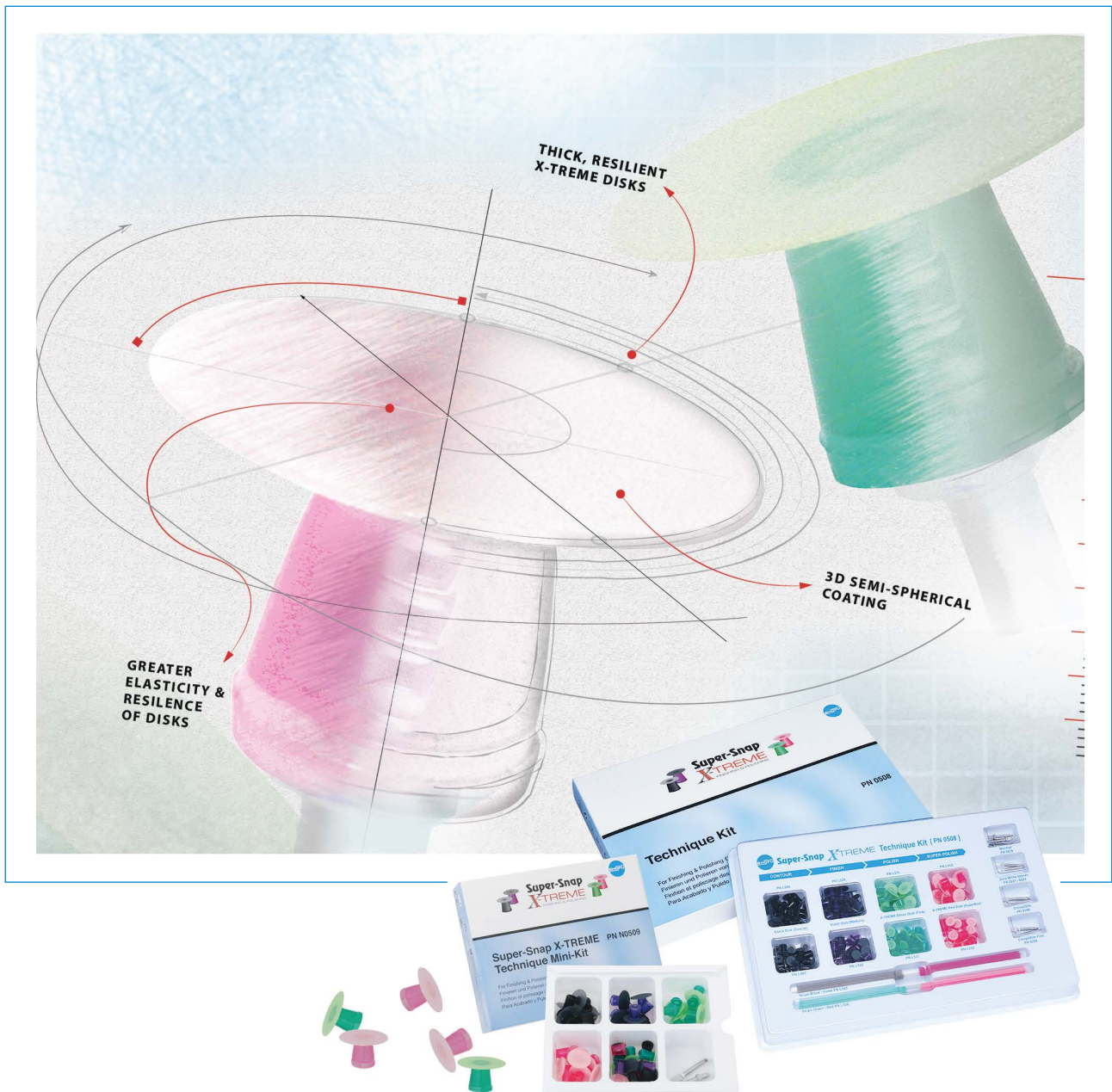


# Super-Snap X-TREME FINISHING & POLISHING

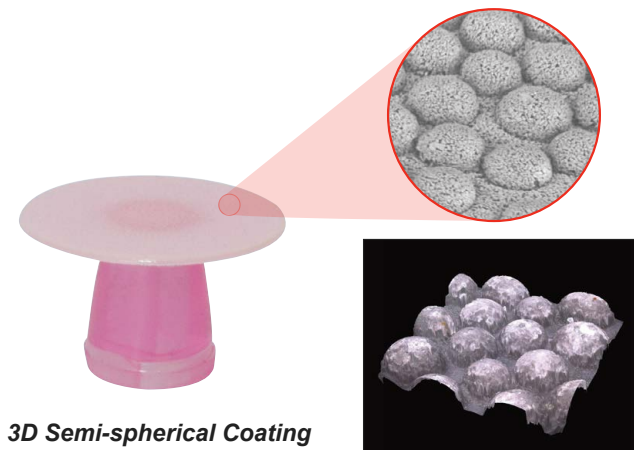
Enhanced Polishing with 3D Coating Technology



POLISH to a **NATURAL**  
**LUSTRE** in A SNAP...

**Super-Snap X-TREME** is the latest enhancement to **Super-Snap** disks, created for you to easily achieve an exceptionally smooth surface with naturally lustrous polish on direct resin restorations, for lasting aesthetics that exceed expectations. These new, aluminium oxide impregnated disks are designed with extra thickness to enable you to apply greater pressure while having the desired tactile feel.

Advanced 3D coating technology adopted from the semi-conductor industry imparts the finest **Super-Snap** (red) disk with a surface that polishes to a satiny gloss in just a few strokes with minimal surface scars.



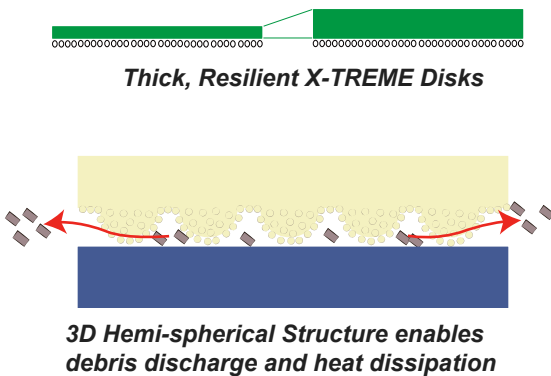
**3D Semi-spherical Coating**



**Super-Snap X-TREME Disk Polishing (Fine)**



**Super-Snap X-TREME Disk Super-polishing (Superfine)**

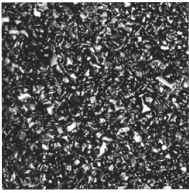


**Super-Snap X-TREME offers**

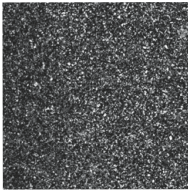
- Extra thickness offers greater pressure, durability and better tactile feel for an enhanced polishing experience
- Greater elasticity and resilience of the disks facilitate easy polishing in interproximal areas
- Advanced 3D architecture with extra aluminium oxide coating in the Superfine red disks imparts a natural gloss and exceptionally smooth surface
- Semi-spherical surface structure of the red disks enables debris discharge to prevent clogging and secondary scratches
- 3D semi-spherical structure also prevents denaturing of the resin surface by dissipating heat
- Improves polishing efficiency

FLEXIBLE

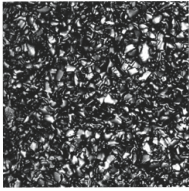
## Super-Snap Disk Surface x 400



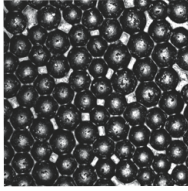
**Super-Snap  
Green Disk**



**Super-Snap  
Red Disk**

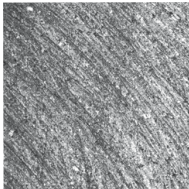


**Super-Snap  
X-TREME  
Green Disk**

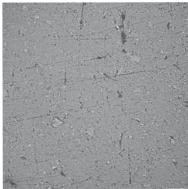


**Super-Snap  
X-TREME  
Red Disk**

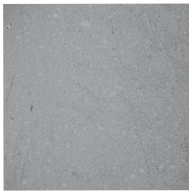
## Composite Surface x 400



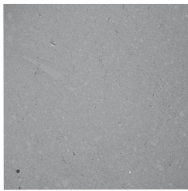
**Before Polishing**



**Current  
Super-Snap**

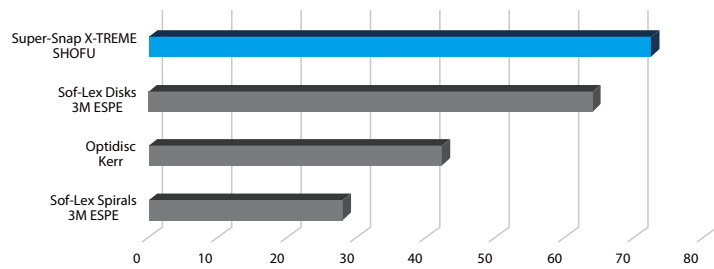


**With X-TREME  
Disks**

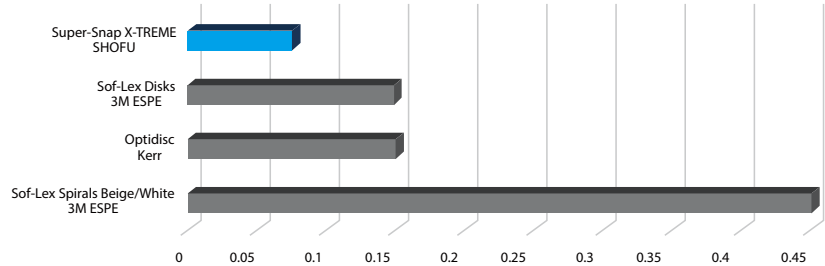


**Diamond Paste**

## Gloss Level (Gs)



## Surface Roughness (Ra)



\*Test Results – SHOFU R&D

## Proven Track Record

**Super-Snap**, the proven 4-step, disposable disk system, enables hassle-free, safe and efficient contouring, finishing and polishing of all direct aesthetic resins. Impregnated either with silicon carbide or aluminium oxide abrasive grits, these disks are designed free of a metal center to completely eliminate the risk of blemishes or discoloration on the restoration surface. A unique Christmas-tree shaped mandrel head locks in the resilient silicone mount for better control while allowing users to easily change to a lower grit disk during sequential polishing.

**Super-Snap Polystrips** are colour co-ordinated, double-ended interproximal strips created with a different grit on each end, for finishing and polishing of interproximal restoration surface.

## Attributes

- **Super-Snap** disks come in 4 different grits colour coded by grit size:

*Course Black: Contouring*

*Medium Violet: Finishing*

*Fine Green: Pre-polishing*

*Superfine Red: Polishing*

- 2 Sizes: Regular 12 mm & Mini 8 mm diameter disks

- **Super-Snap** disks are ultra-thin yet resilient to easily reach interproximal areas while allowing excellent visibility of the surfaces being polished

- **Super-Snap** disks have a soft, safe, elastic silicone snap-on shank mount for easy placement of mandrels

- Unlike disks with metal centers, **Super-Snap** disks completely eliminate the risk of gouging restorations

- Used dry at low speed of 10.000 rpm – 12.000 rpm with light, intermittent strokes (0.3N – 0.6N) for maximum control, better visibility and a superior polish

- Promotes infection control in the operator with disposable disks



# Super-Snap Polishing System

Shape Category	Contouring		Finishing				Polishing		Super-Polishing	
<b>Super-Snap Shape</b>										
	Black (Coarse)		Violet (Medium)				Green (Fine)		Red (Super Fine)	
<b>Refills (50's a box)</b>	L506	L507	L508	L509	L528	L522	L501	L519	L502	L521
<b>Super-Snap X-treme Shape</b>	-									
	-						Green (Fine)		Red (Super Fine)	
<b>Refills (50's a box)</b>	-						L511	L531	L512	L532

## Order Information



### Super-Snap X-TREME Technique Kit [PN 0508]

160 x disks, 40 x polystrips,  
2 x Dura-White Stones CA  
(CN1 & FL2), 2 x Composite  
Midi-Point CA, 2 x Composite  
Fine Midi-Point CA,  
4 x Super-Snap CA Mandrels

### Super-Snap Polystrips [PN L525] & [PN L526]

100 x Polystrips black (coarse)  
& Violet (medium)  
100 x Polystrips green (Fine)  
& red (Superfine)



### Super-Snap X-TREME Technique Mini Kit [PN N0509]

48 x standard disks,  
Composite Fine Midi-Point CA,  
CA Mandrels



SHOFU INC. 11 Kamitakamatsu-cho, Fukuine, Higashiyama-ku, Kyoto 605 - 0983, Japan ([www.shofu.co.jp](http://www.shofu.co.jp))  
 SHOFU DENTAL ASIA-PACIFIC PTE. LTD. 10 Science Park Road, #03-12 The Alpha, Science Park II, Singapore 117684 ([www.shofu.com.sg](http://www.shofu.com.sg))  
 SHOFU DENTAL TRADING (SHANGHAI) CO. LTD. No.645 Jiye Road, Sheshan Industry Park Songjiang Shanghai 201602, China ([www.shofu.com.cn](http://www.shofu.com.cn))  
 SHOFU DENTAL CORPORATION 1225 Stone Drive, San Marcos, CA 92078-4059, USA ([www.shofu.com](http://www.shofu.com))  
 SHOFU DENTAL GmbH Am Brüll 17, 40878 Ratingen, Germany ([www.shofu.de](http://www.shofu.de))  
 SHOFU UK. Riverside House, River Lawn Road, Tonbridge, Kent TN9 1EP, United Kingdom ([www.shofu.co.uk](http://www.shofu.co.uk))