

VINTAGE  
*Art*  
Universal

All Purpose True-Colour Stain System





# Discover the New Dimension

**PASSION** meets **PERFECTION** with **Vintage Art Universal** stains, an innovative, vivid, true colour stain system for life-like ceramic restorations.

Developed with novel low-fusing, ultra-fine glass technology and intense colour pigment particle structure, **Vintage Art Powder** stains and glazes exhibit a homogeneous mixture with convenient handling for remarkable coverage.

One system that does it all ... **Vintage Art Universal** stain system is ideal for both 2D and 3D staining to meticulously replicate internal and external shade characteristics of natural teeth.

- Universal
  - Versatile
  - Predictable
- 
- A collection of Vintage Art Universal stain products is displayed on a black surface with colorful paint splatters. The products include several small white jars of powder with colored labels (e.g., O-Br, B, W, O, BL-G, DR-Br, P, K, BI, Gr, Y, V, B) and one larger white bottle of Universal Liquid with a white cap. The labels on the jars indicate different colors and shades available in the system.



## Unleash your Creativity ... Stain like a Master

### Universal

Ultra-fine,  
intense  
powder stains  
for all types of  
dental  
ceramics

### Error-free

What you see  
is  
what you get  
before & after  
firing

### Efficient

Fast one-step  
stain / glaze  
firing

### Easy

Apply exactly  
where you  
need it, in thick  
/ thin  
consistency  
with no runs  
or streaks

### Natural

Mimic true-to-  
nature shades,  
characteristics  
& 3D effects

### Flexible

2 variations of  
mixing liquid  
& glazing  
powder with /  
without  
fluorescence

### Economical

Minimize  
inventory with  
one stain  
system for  
both 2D & 3D  
staining

## 3D Staining of Monolithic Zirconia Restorations



Designed for aspiring beginners and artistic experts alike, **Vintage Art Universal** is a versatile stain system that assures fast, simple and predictable aesthetic staining of ceramic restorations

## ●●● Case 1

Individualized staining of Vintage ZR veneered porcelain restoration.



## ●●● Case 2

Life-like 3D staining of fully contoured, ZR Lucent (five-layered) zirconia restoration.



“no more unpleasant surprises after firing !”



## Error-free Staining ... Control at your Fingertips

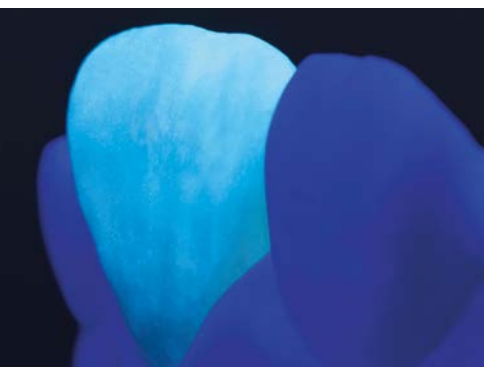
Save time & minimize errors with **Yamamoto Liquid**. This unique “true colour” mixing liquid invented by world-renowned ceramist Makoto Yamamoto, is precisely formulated with a glass-like refractive index and enables you to visualize true shade effects and translucency of the stains / glazes, even before firing.

## Instant 3D Staining of Monolithic Restorations

Thicker, cohesive mixtures of vivid stains & fluorescent **Glazing Powder GP-F** is easily achieved with the highly viscous **Yamamoto Liquid**, that can be precisely applied on incisal, occlusal or contact areas of monolithic lithium disilicate or zirconia restorations for life-like 3D colour effects.



## Mimic Natural Fluorescence



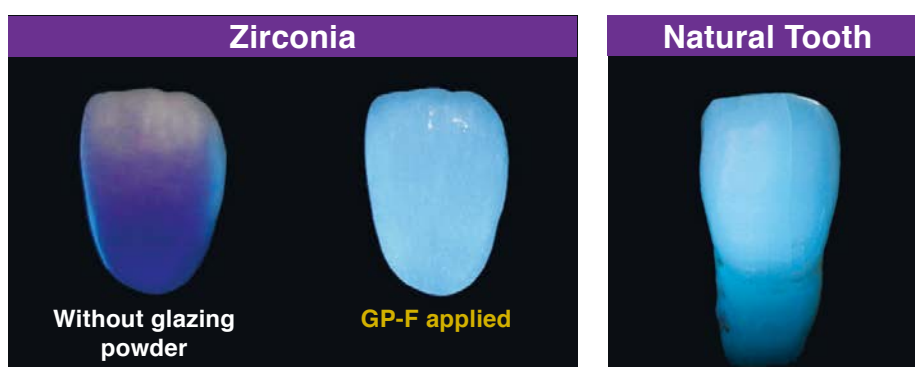
**Vintage Art Universal** stain system offers 2 variations of glazing powder with excellent surface adaptation, brilliant natural gloss and option of a wide range of translucency adjusted with Yamamoto / Universal stain liquid.

### Glazing Powder GP-F

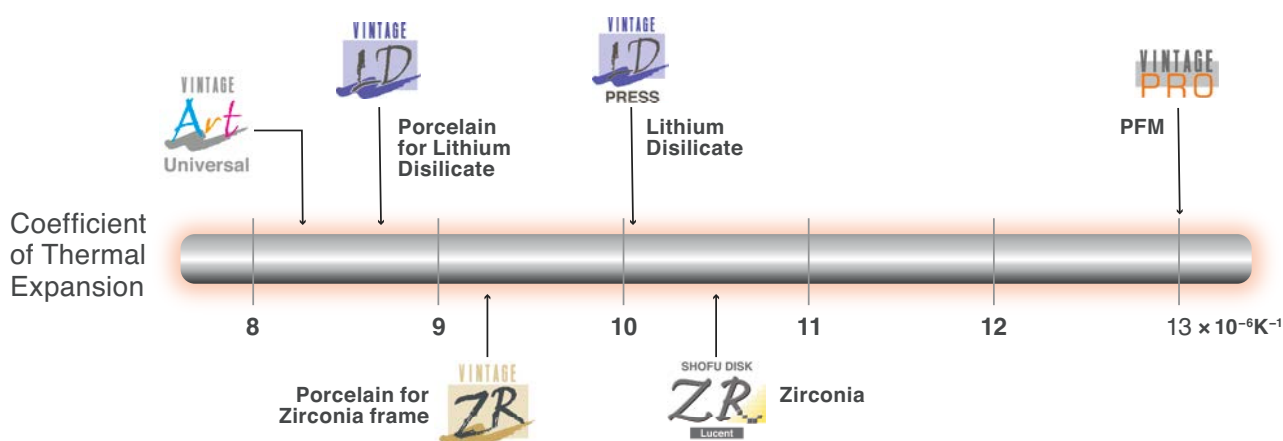
Fluorescent glaze to individualize monolithic zirconia and lithium disilicate restorations.

### Glazing Powder GP

Non-fluorescent glaze to characterize all low and high-fusing veneering ceramics (Vintage PRO / Vintage LD / Vintage ZR).



## Truly Universal ...



**Vintage Art Universal** stains and glazes exhibit excellent firing stability and remarkable results in all commercially available ceramic furnaces.

Veneered Lithium Disilicate .....	730 °C – 740 °C
Monolithic Lithium Disilicate .....	740 °C – 750 °C
Veneered Zirconia / PFM Restorations .....	750 °C – 800 °C
Monolithic Zirconia / Porcelain Teeth .....	800 °C – 850 °C

*\*Final firing temperature guidelines (may vary depending on design & operating voltage of your furnace)*



# Vibrant Colour Spectrum



**Vintage Art Universal** stains exhibit a variety of colour effects and intensities to easily mimic the shade nuances of natural teeth in various degrees of opacity and fluorescence.

These vibrant stains can be mixed in different concentrations with the dedicated fluorescent **Glazing Powder GP-F** to obtain the illusion of depth and vitality, particularly in monolithic restorations.

## View Results in *Real Time* !



**Vintage Art Universal Glazing Powder** mixed with conventional mixing liquid, results in a milky mixture, actual shade and translucency is visible only after vacuum firing.



**Vintage Art Universal Glazing Powder** mixed with **Yamamoto Liquid** exhibits final translucency even before firing.

# Order Information & Related Products

## Vintage Art Universal Stain System



### Basic Color Set [REF P0723]

16 powder stains, 2g each:  
Pink, Violet, Yellow, Green, Blue,  
Blue Gray, Orange, Orange Brown,  
Dark Red Brown, White, Black, Khaki,  
A shade, B shade, C shade, D shade,  
Glazing Powder GP-F (15g),  
Vintage Art Universal Liquid (50ml)  
Color table, Advanced product information



### Basic Color Stains (2g)

SHADE	REF
<b>P</b> Pink	P0696
<b>V</b> Violet	P0697
<b>Y</b> Yellow	P0699
<b>G</b> Gray	P0701
<b>BI</b> Blue	P0702
<b>O</b> Orange	P0704
<b>W</b> White	P0712
<b>B</b> Black	P0714
<b>Gr</b> Green	P0715



### Glazing Powder GP

15g [REF P0691]  
50g [REF P0692]



### Glazing Powder GP-F

15g [REF P0693]  
50g [REF P0694]



### Vintage Art Universal Liquid

50 ml [REF P0695]



### Yamamoto Liquid

50 ml with pipette [REF P1695]

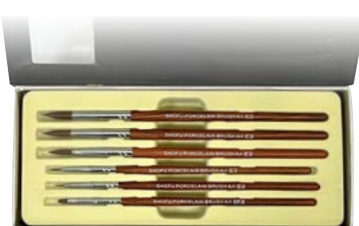
### Color Stains (2g)

SHADE	REF
<b>DR</b> Deep Red	P0698
<b>LY</b> Light Yellow	P0700
<b>BI-G</b> Blue Gray	P0703
<b>O-Br</b> Orange Brown	P0705
<b>MP</b> Mamelon Pink	P0706
<b>Mlv</b> Mamelon Ivory	P0707
<b>LO</b> Light Orange	P0708
<b>DR-Br</b> Dark Red Brown	P0709
<b>Br</b> Brown	P0710
<b>B-Br</b> Black Brown	P0711
<b>Vn</b> Vanilla	P0713
<b>K</b> Khaki	P0722

### Shofu Porcelain Brush Set [REF K0076] x 6 Brushes

Individual Brush:

- No.OP0 [REF K0070]
- No.P3 [REF K0071]
- No.P5 [REF K0072]
- No.P7 [REF K0073]
- No.S0 [REF K0074]
- No.S1 [REF K0075]



### Shade Stains (2g)

SHADE	REF
<b>AS</b> A Shade	P0716
<b>BS</b> B Shade	P0717
<b>CS</b> C Shade	P0718
<b>DS</b> D Shade	P0719
<b>RS</b> R Shade	P0720
<b>LS</b> Light Shade	P0721



### SHOFU DENTAL ASIA-PACIFIC PTE. LTD.

1 Science Park Road, #01-01 / 02 The Capricorn, Science Park II,  
Singapore 117528 Tel: (65) 6377 2722  
eMail: mailbx@shofu.com.sg www.shofu.com.sg



VAU20230930