

EyeSpecial C-IV

Smart Dental Camera
Designed for the Entire Team



FAST

Precise Versatile



Shofu's Gen 4 smart digital dental camera - EyeSpecial C-IV is developed exclusively for predictable and consistent clinical photographs for everyday dentistry. Equipped with state-of-the-art digital technology, this foolproof, user-friendly dental camera meets user-specific needs ranging from case and legal documentation, diagnosis and treatment planning, patient communication and education, insurance verification, dental lab and specialist collaboration.

EyeSpecial Features...

- 9 pre-set dental shooting modes
- Compact, ultra-light & easy to hold with one hand
- Fast auto-focus with built-in anti-shake with image stabilization and anti-reflection features
- Cutting edge Flashmatic System for True-colour reproduction with blackout of ambient light
- Water, chemical and scratch resistant to prevent cross contamination
- Brilliant display with fast & Intuitive menu navigation
- Video function
- Micro HDMI connector
- QR code features
- Trigger Flash Mode for portrait photography
- Optional attachable cross polarizer

Easy, Intuitive Navigation

Operating EyeSpecial C-IV is virtually effortless and eliminates the need for prior photography knowledge or extensive training.

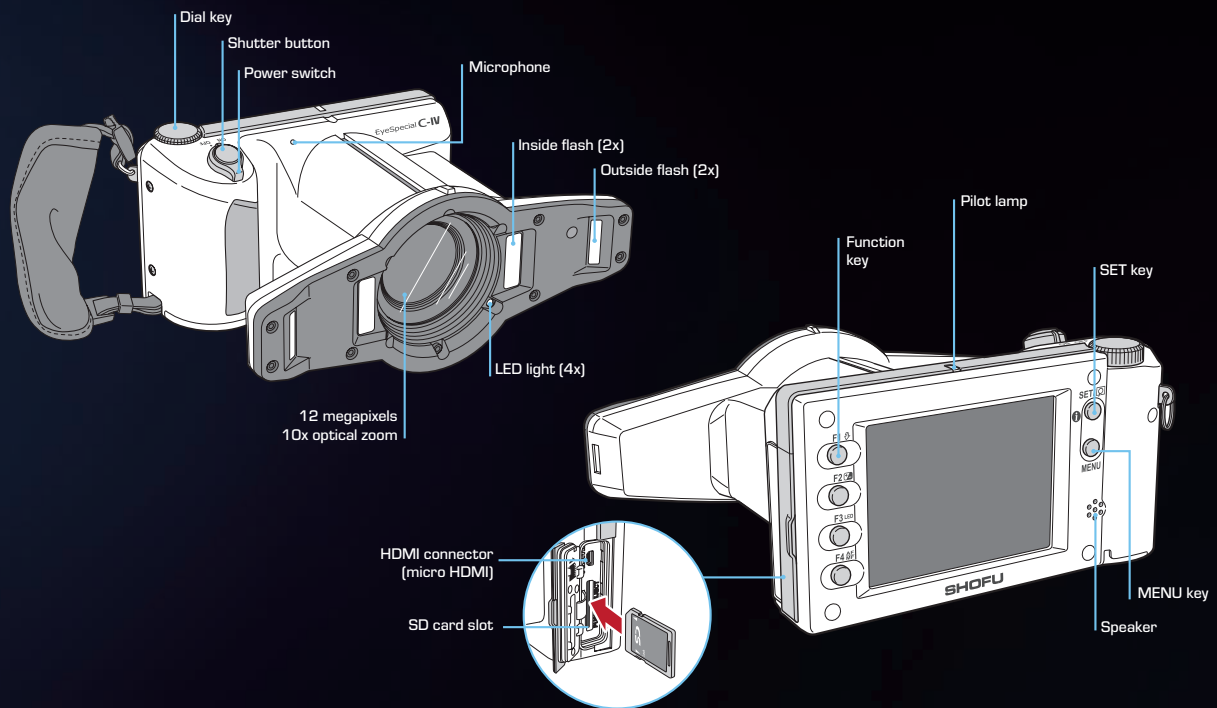
The high-resolution 3.5" LCD touch screen panel with an intuitive menu and simple, uncomplicated icons guides users to easily select the appropriate option and capture consistent, quality clinical photos. Images can be instantly viewed on the display, assessed, edited with draw-edit function, communicated and archived conveniently.

Compact and Convenient

This ultralight, high-performance camera is ready to use, right out-of-the-box without requiring any "heavyweight" accessories such as external flashes or interchangeable lenses. Easily operated with just one hand, it frees up the other to hold the cheek retractor or mirror during the dental photography.



EyeSpecial C-IV



Stress-Free Photography

The intelligent FlashMatic system operates in tandem with the built-in Xenon flashes to optimize intra-oral illumination while blocking out the influence of ambient light. It automatically adjusts flash duration and intensity depending on the selected mode, creating controlled conditions for optimal exposure and capture of true-colour images. The integrated autofocus system and the shooting modes minimize error and guarantee precise, detailed clinical photographs, with maximum depth of field ranging to the second molar.



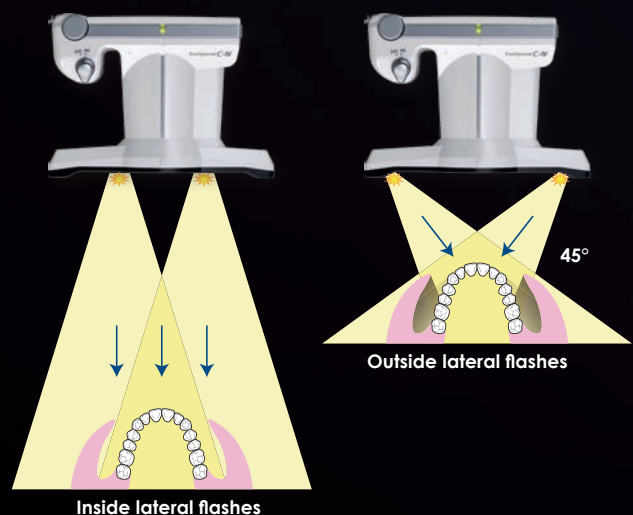
Focus point centered high contrast, high resolution images with exceptional depth of field every time.



At ACTA (Academic Centre for Dentistry in Amsterdam), digital dental photography is part and parcel of daily practice – for patient communication, case documentation and treatment planning.

Four Flashes – Two lighting modes

The right combination of lateral flashes ensures perfect illumination of the oral environment and minimizes reflections on tooth surfaces in every pre-set mode.





Cross-infection Control

Designed with a durable chemical and scratch resistant polymer body, EyeSpecial dental camera can be easily disinfected with ethanol wipes in between patients, in compliance with the stringent infection control protocols in the contemporary dental operator.

Practical Accessories

Fine Details with Tele-Macro Mode

An optical zoom feature enables magnification rates of upto 1.4:1.

Finer anatomical details can be captured in tele-macro mode in combination with the high-quality, screw on closeup lens with magnification rates of up to 2:1.



Cross-polarized Photography

EyeSpecial C-IV offers an optional cross-polarizer that is attached onto the front of the camera over the close-up lens. The cross-polarizer is ideal for in-depth view of internal structures such as chroma, internal light effects and individual tooth characteristics without distortion from light reflections on enamel surface.

It is designed with polarizing components positioned at right angles to the flash and lens to eliminate light reflections on the tooth surface and accurately assess shade / colour effects of hard and soft tissues.



Without cross polarizer



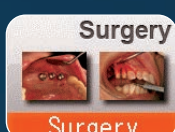
With cross polarizer

Predictable Shooting Modes



Standard

Standard intraoral photography with true-colour optimisation.



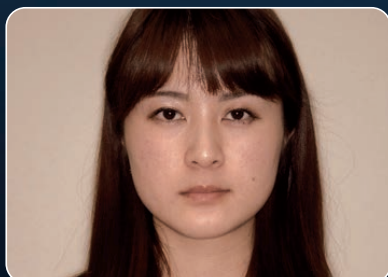
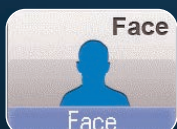
Surgery

Intraoral photography from a distance.



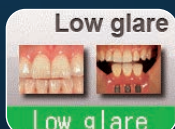
Mirror

Intraoral photography using a dental mirror. The image can be reversed afterwards.



Face

Facial photographs, half-body or full-body portraits



Low Glare

Photographing details of anterior teeth, working models or indirect restorations



Whitening

Comparison of tooth shades before and after whitening/bleaching



Tele macro

Detailed close-ups of anterior teeth with the close-up lens attached



Isolate Shade

Automatic isolation of the gingival shade for optimal shade taking



Movie

Film documentation of function and motion analysis

Specifications

Sensor

Type	Primary colour filter, CMOS sensor
Size	1/1.7 inch
Total Pixels	Approx. 12 million pixels (4,163 x 3,062)
Effective Pixels	Approx. 12 million pixels (4,000 x 3,000)
Sensitivity	ISO 100 to 3,200

Lens

Focal length (35mm equivalent)	28 – 300mm
Maximum aperture	Wide: 2.83 – 7.99 Tele: 2.85 – 11.44
Zooming method	Optical + Digital zoom
Digital zoom	10 steps from x1.05 to x2
Optical filter	UV / IR cut

Autofocus (AF)

Method	Contrast auto focus
AF area	Center-weighted / Spot
Focus mode	Single shot auto focus and manual focus by adjusting the distance
AF assist light	4 white LED lights

Automatic Exposure (AE)

Method	TTL (through the lens) metering / FlashMatic (patented) light control
AE area	Center-weighted / Spot / Standard
Shutter release	Electronic and Mechanical
Shutter speed	1/15 to 1/1,000 sec., automatic change

Image Storage

Storage media	SD / SDHC / SDXC (max. 512GB)
File format	JPEG / MOV (with patient information file (.MIF))
SD Card record format	DCF (Standard / date)
Image size	Aspect ratio 4:3 12M / 8M / 5M / 3M / 2M / VGA Aspect ratio 3:2 10M / 8M / 4M / 3M
Video pixels	HD (1,280x720), 60 fps
Image quality	Extra fine / Fine / Standard
Information imprinting	Date + Shooting conditions + Patient information

Camera

Power supply	4 Alkaline AA batteries / 4 rechargeable nickel-metal hydride batteries (NiMH)
Power save function	Off / 1 / 2 / 3 / 5 min
Dimensions	W176 x H80mm x D125 (without accessories)
Weight	Approx. 590g (without accessories)
Water resistant	Complying with IPX4
Chemical resistance	Ethanol disinfection

Order Information



REF E0021

Camera EyeSpecial C-IV
Close-up lens (49 mm) from Kenko
Lens cap
Hand strap
4 AA batteries
16 GB SDHC memory card
SHOFU gray card
User's manual
Quick reference
Important safety instructions

REF E0021	EyeSpecial C-IV incl. accessories
REF E0022	Cross Polarizer
REF E0002	Hand strap
REF E0004	SHOFU gray card
REF E0005	Lens cap



SHOFU DENTAL ASIA-PACIFIC PTE. LTD.
1 Science Park Road, #01-01 / 02 The Capricorn, Singapore Science Park II,
Singapore 117528 Tel: (65) 6377 2722
eMail: mailbox@shofu.com.sg www.shofu.com.sg



ES20230930