

# BEAUTIFIL II Extended Aesthetics

## THE ART OF DIRECT RESIN RESTORATION



Minimally Invasive  
Cosmetic Dentistry



# BEAUTIFIL

## *Goes Beyond the Conventional*

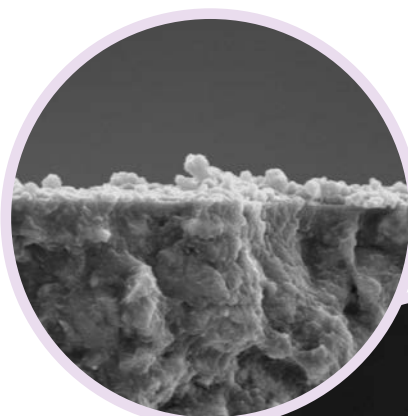
**BEAUTIFIL II** is a clinically proven, universal nano-hybrid direct aesthetic resin with true to nature shades, varying levels of translucency and natural opalescence for an invisible shade match, predictable clinical performance and long-term durability.

**BEAUTIFIL II** microstructure mimics the internal structure of natural teeth to optimize light interaction for optical characteristics similar to natural dentin and enamel, so restorations are virtually undetectable.

### **Conservative Direct Veneer on a Non-Vital Anterior**

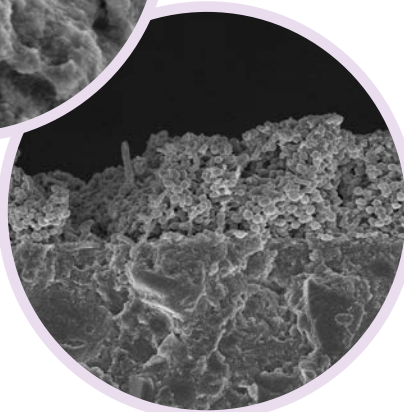


Courtesy of Dr. Sushil Koirala, BDS, AAAD.

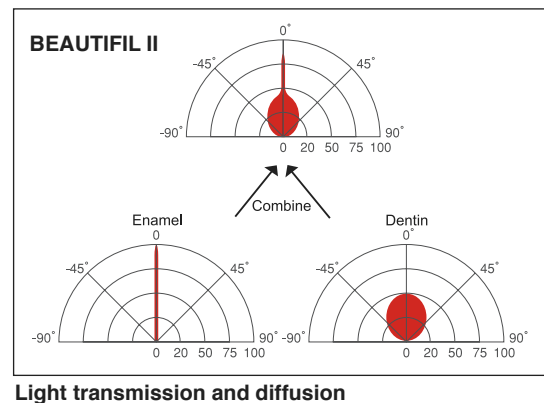
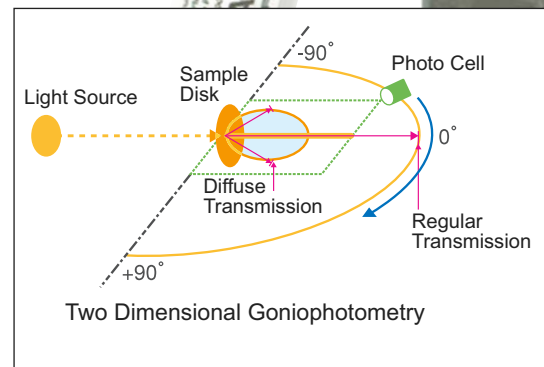


**BEAUTIFIL II  
(with S-PRG filler)**  
sporadic plaque  
formation

Conventional  
Composite Resin  
(with no S-PRG  
filler) proliferated  
plaque formation



Yamamoto et al, *The Japanese Journal of Conservative Dentistry*, 47 (3), 391-402 (2004).



### **The S-PRG Chemistry ...**

Proprietary S-PRG filler in **BEAUTIFIL** series presents with a trilaminar structure that balances the light-diffusion and transmission effects to attain the desired level of opacity and blend in with natural tooth shades.

S-PRG fillers also provide sustained fluoride protection and unique anti-plaque effect to minimize bacterial colonization and promote restoration integrity.

# Simplify *Pink & White* Aesthetics ...

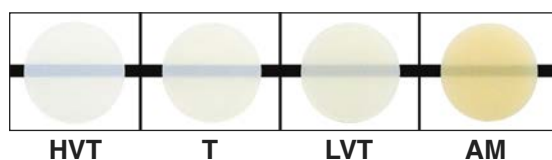
**BEAUTIFIL II** Enamel and Gingiva are a recent line extension that complement **BEAUTIFIL II** series by enlivening the final restoration and restoring red-white aesthetic balance.

**BEAUTIFIL II** Enamel is a value based shade system, available in 4 naturally translucent and opalescent shades that blend in easily to attain life-like shade reproduction and vitalise the aesthetic impression of **BEAUTIFIL II**.

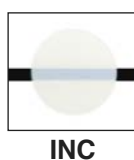
**BEAUTIFIL II** Gingiva is available in 5 natural gum shade variations to match all ethnicities and patient specific gingival shades.

## Select from a Rational Shade Line Up

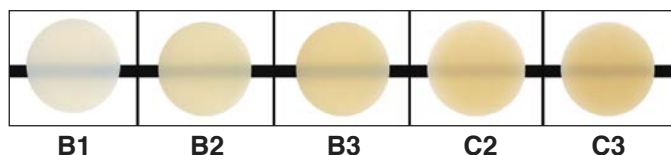
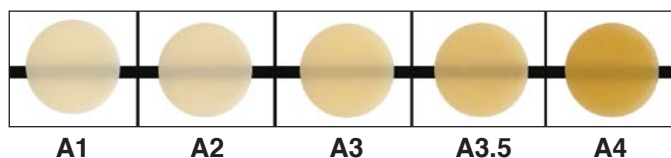
### BEAUTIFIL II Enamel



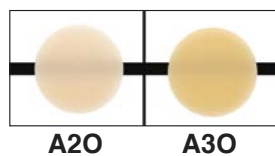
### BEAUTIFIL II Universal Enamel



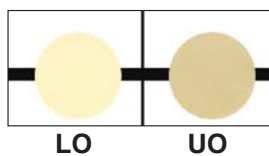
### BEAUTIFIL II Universal Dentin



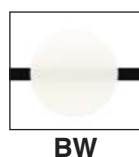
### BEAUTIFIL II Opacious Dentin



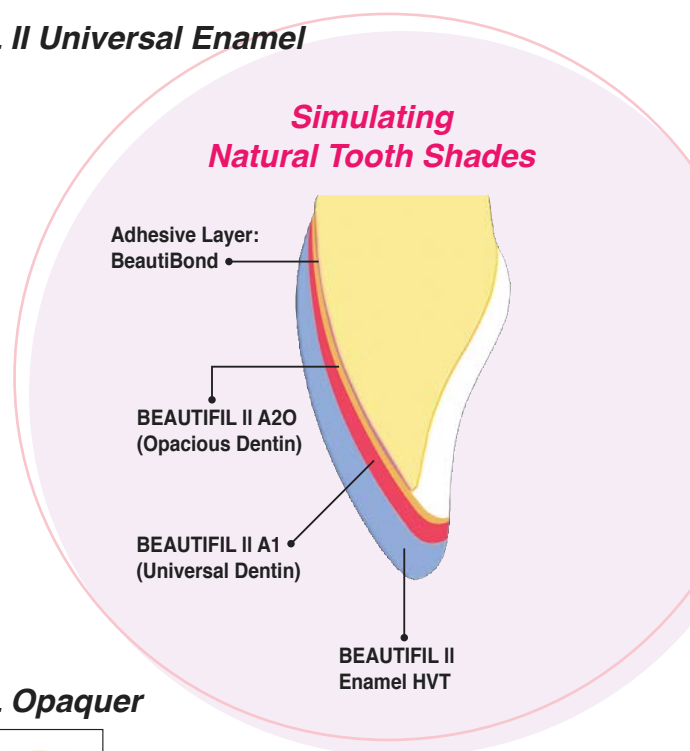
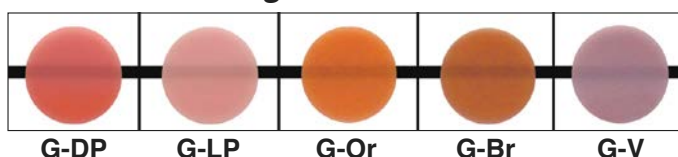
### BEAUTIFIL Opaquer



### BEAUTIFIL II Bleach White



### BEAUTIFIL II Gingiva



\* HVT = High Value Translucent, T = Translucent, LVT = Low Value Translucent, AM = Amber  
\* G-DP = Dark Pink, G-LP = Light Pink, G-Br = Brown, G-Or = Orange, G-V = Violet

# *Restore with Confidence ...*

## **Case 1. Single Shaded Restoration – Direct Veneer Restored with BEAUTIFIL II Enamel HVT**



*Courtesy of Dr. Sushil Koirala, BDS, AAAD.*

## **Case 2. Multi-Shaded Restoration – Direct Veneer restored with BEAUTIFIL II A2O, A1 and Enamel HVT**



*Courtesy of Dr. Sushil Koirala, BDS, AAAD.*

## **Case 3. Multi-Shaded Restoration – Orthodontic case restored with BEAUTIFIL II B1 and Enamel HVT**



*Courtesy of Dr. Frank J Milnar, DDS, AAACD.*



## **Universal Application** **(Standard to Complex Cases)**

- ✓ Correcting & enhancing smiles
- ✓ Direct cosmetic tooth modifications to correct tooth malformations, mild malalignments, diastemas
- ✓ Restoration of all classes of cavities
- ✓ Restoration of cervical carious and non-carious defects
- ✓ Repair of fractured incisal edges, direct veneers and core build-up
- ✓ Restoration of receded or missing gums / papilla, cervical defects, root caries / erosion, exposed PFM margins and implant abutments to achieve the red-white aesthetic balance

## **Essence of Successful Restoration**

**NATURALLY AESTHETIC** – Opalescent shades with varying levels of translucency that blend in for indiscernible restorations

**TRULY VERSATILE** – Predictable shades that are easy to select and match for an array of Simple to Complex Cases

**PRACTICAL** – Non-tacky, creamy and spreadable consistency that is easy to adapt & sculpt into intricate surface detail with longer working time

**EFFORTLESS** – Easy to polish to a lasting natural gloss

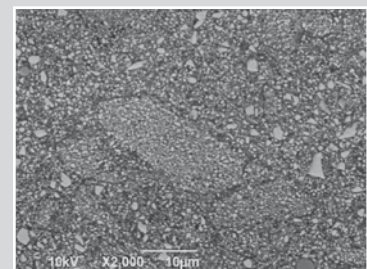
**RELIABLE** – Strong and durable with greater wear resistance

**BIOCOMPATIBLE** – Sustained fluoride protection and anti-plaque benefits

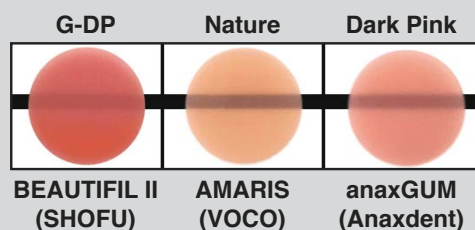
**FUNCTIONAL** – Highly radiopaque for accurate diagnostic evaluation

## **Predictable Aesthetics & Function**

**BEAUTIFIL II Enamel & Gingiva** comprise S-PRG fillers, nanofillers and newly developed organic-inorganic filler complex that are securely integrated into a unique silanol modified resin network to ensure robust microstructure, remarkable surface integrity, stable shades, exceptional surface polish and gloss retention in the final restoration.



SEM – BEAUTIFIL II Enamel



**BEAUTIFIL Gingiva** exhibits remarkable internal light diffusion and adequate opacity to easily mask underlying structures even with thin layers of application and merge imperceptibly with natural gum.

## Cosmetic Smile Rejuvenation with BEAUTIFIL II Enamel

*Courtesy of Dr. Sushil Koirala, BDS, AAAD.*



1. Smile imperfections in a young patient



2. Smile brightened with BEAUTIFIL II Enamel HVT with multiple direct veneers



3. Surface Texture created with BEAUTIFIL II Enamel HVT



4. Direct Smile Rejuvenation with BEAUTIFIL II Enamel

## Periodontally compromised anterior tooth with severe gingival recession

*Courtesy of Dr. Sushil Koirala, BDS, AAAD.*



**Before**



**After.** Periodontal graft & restoration with BEAUTIFIL II Gingiva

## Restoring Pink & White aesthetic harmony with BEAUTIFIL II Enamel and Gingiva

*Courtesy of Dr. Frank J Milnar, DDS, AAACD.*



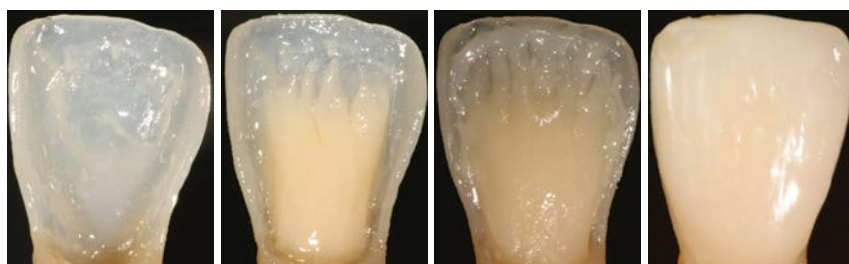
**Before**



**After**

## Resin Artistry ... Simplified Natural Stratification

Courtesy of Dr. Sushil Koirala, BDS, AAAD.

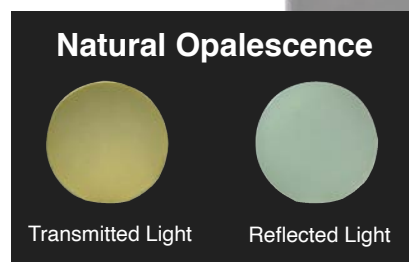


Enamel shell created with BEAUTIFIL II Enamel HVT

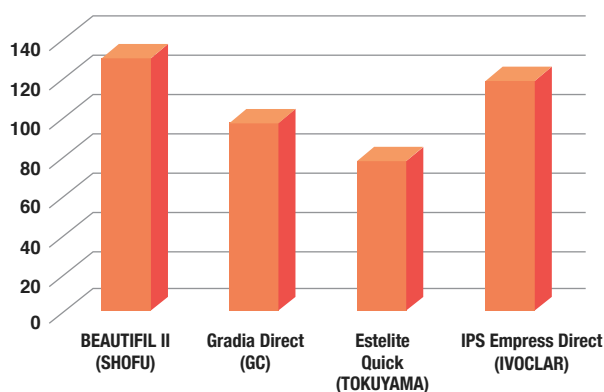
Mamelon structure created with BEAUTIFIL II A30

Dentin built up with BEAUTIFIL II A3 (middle-third) and A2 at incisal edge

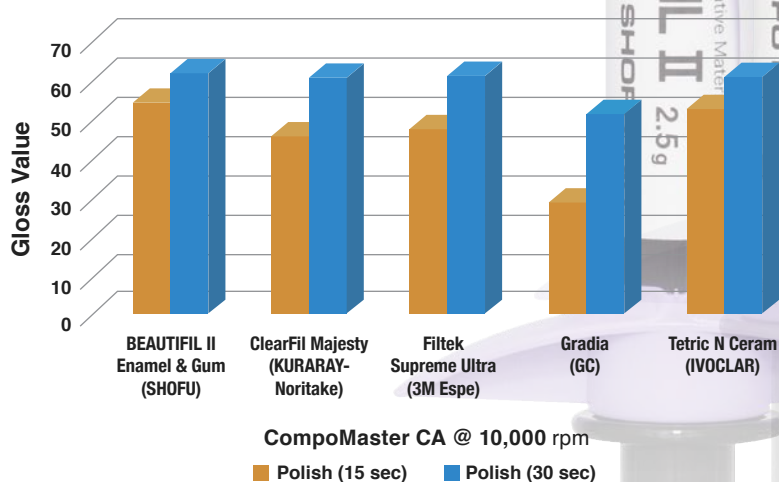
Outer Enamel layer created with BEAUTIFIL II Enamel



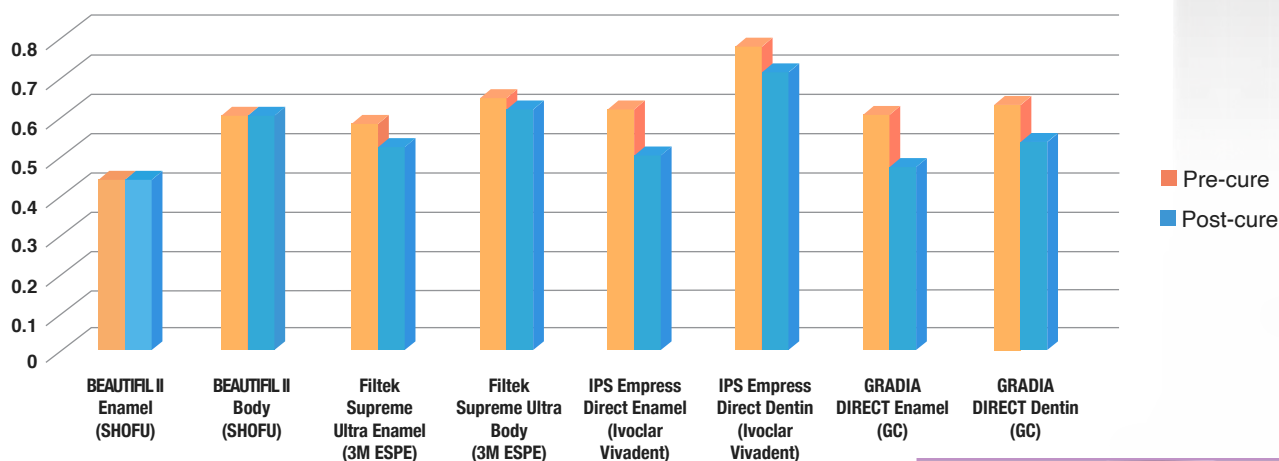
Flexural Strength (MPa)



Surface Gloss (GV)



Translucency (Pre & Post-cure)  
Shift in Translucency



## User-friendly & Efficient Delivery

**BEAUTIFIL II Enamel** and **Gingiva** come in an ergonomically designed one-push syringe with a smaller nozzle for controlled extrusion of the desired proportion of material. The non-sticky, smooth and creamy paste has optimal viscosity that simplifies layering and shaping of even the finest details without slumping.



## Order Information



BEAUTIFIL Injectable X Syringe 2.2g	
SHADE	REF
A1	Y2501
A2	Y2502
A3	Y2503
A3.5	Y2504
A4	Y2505
B1	Y2506
B2	Y2507
C2	Y2508
D2	Y2509
SA0.5	Y2500
SA0.50	Y2510
A10 (Opacious A1)	Y2511
A20 (Opacious A2)	Y2512
INC (Incisal)	Y2513
BW (Bleach White)	Y2514



BEAUTIFIL Injectable XSL Syringe 2.2g	
SHADE	REF
A1	Y2521
A2	Y2522
A3	Y2523
A3.5	Y2524
A4	Y2525
B1	Y2526
B2	Y2527
A20 (Opacious A2)	Y2530
A30 (Opacious A3)	Y2531
CV	Y2535
MI	Y2534
INC (Incisal)	Y2532
BW (Bleach White)	Y2533



BEAUTIFIL II Syringe 4.5g	
SHADE	REF
A1	1401
A2	1402
A3	1403
A3.5	1404
A4	1405
B1	1408
B2	1409
B3	1410
C2	1412
C3	1413
A20 (Opacious A2)	1419
A30 (Opacious A3)	1420
INC (Incisal)	1415
BW (Bleach White)	1416



BEAUTIFIL II Gingiva 2.5g	
SHADE	REF
G-LP	Y2256
G-DP	Y2257
G-V	Y2258
G-BR	Y2259
G-OR	Y2260



BEAUTIFIL II Enamel 2.5g	
SHADE	REF
T	Y2250
HVT	Y2251
LVT	Y2252
AM	Y2253



BEAUTIFIL II Enamel 2.5g	
SHADE	REF
UO	1363
LO	1364



FL-BOND II Complete Set  
[REF 1306]



BeautiBond Xtreme Set  
[REF Y2448]



Official Partner



Minimally Invasive  
Cosmetic Dentistry

**SHOFU DENTAL ASIA-PACIFIC PTE. LTD.**

1 Science Park Road, #01-01 / 02 The Capricorn, Singapore Science Park II,  
Singapore 117528 Tel: (65) 6377 2722

eMail: mailbx@shofu.com.sg www.shofu.com.sg



BEA20240606