

BEAUTIFIL Injectable

The One True Bioactive
Injectable Restorative



BEAUTIFIL Injectable

BEAUTIFIL Injectable X, the next-generation bioactive universal injectable restorative, signals a new era in restorative dentistry by offering extra strength, exceptional durability, life-like aesthetics and lasting self-polishing gloss with the unique “inject as you shape” convenience.

Revolutionize your daily workflow with Smart Solutions

Prepare >>> Inject & Shape >>> Finish



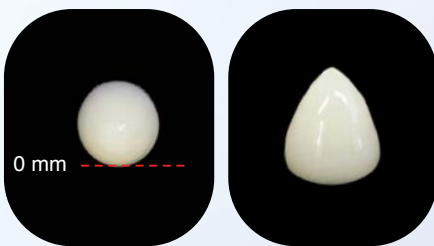
In a League of Its Own

- Convenience with “Inject as you Shape”
- Save time & drive efficiency
- Bioactive nano S-PRG fillers provide lasting anti-caries benefits
- Predictable Aesthetics, Seamless shade match with self-polishing gloss
- Remarkable strength for Anterior / Posterior restorations

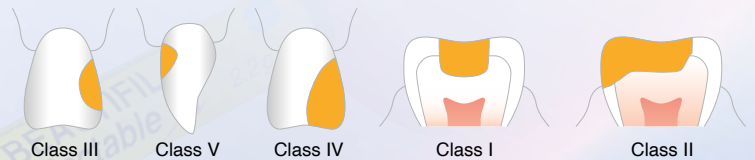
Two Distinct Viscosities

BEAUTIFIL Injectable

(Universal Restorative)

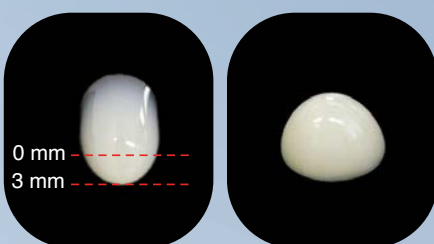
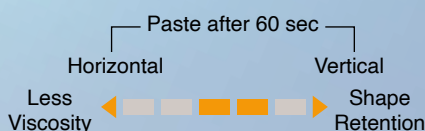


- **Restoration of Anterior / Posterior teeth**
 - Class I, II, III, IV, V, VI
 - Pediatric and geriatric dentition
 - Tooth wear (Abrasion, Erosion, Abfraction)
- **Minimally invasive cosmetic restorations**
 - Diastema closure
 - Tooth size and shape modification
 - Tooth surface defects
 - Smile rejuvenation
- Cuspal restoration
- Post-ortho corrections including Black triangle closure
- Composite Tooth Splinting
- Repair of Composite or Ceramic restorations

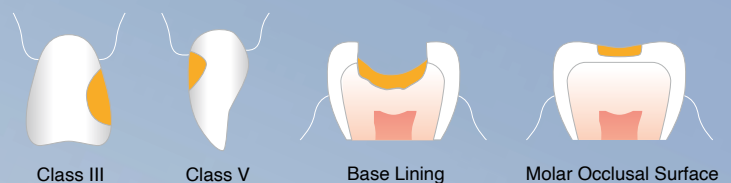


BEAUTIFIL Injectable XSL

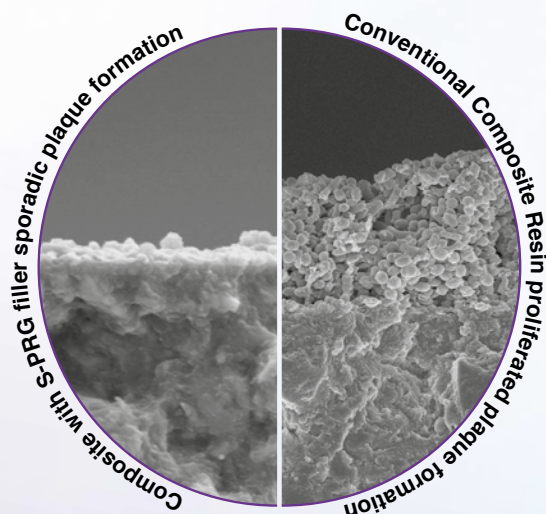
(Self-Levelling high strength flow)



- Class III, IV, V
- Palatal shell technique
- Base & Liner
- Gingival box of Class II
- Placement of orthodontic brackets
- Composite Tooth Splinting
- Restoration of tooth wear (*Abrasion, Erosion, Abfraction*)



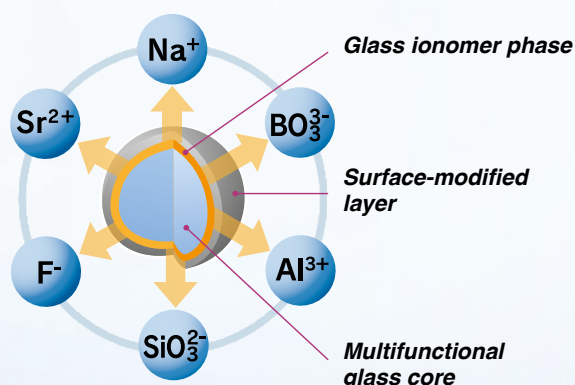
Chemistry Behind BEAUTIFIL Injectable



Photographs courtesy of Prof. Koji Yamamoto of the ASAHI University

BEAUTIFIL Injectable X & XSL feature a novel filler technology that involves controlled miniaturization and uniform nano-silanization for higher filler load and optimal filler-resin ratio for superior strength and durability.

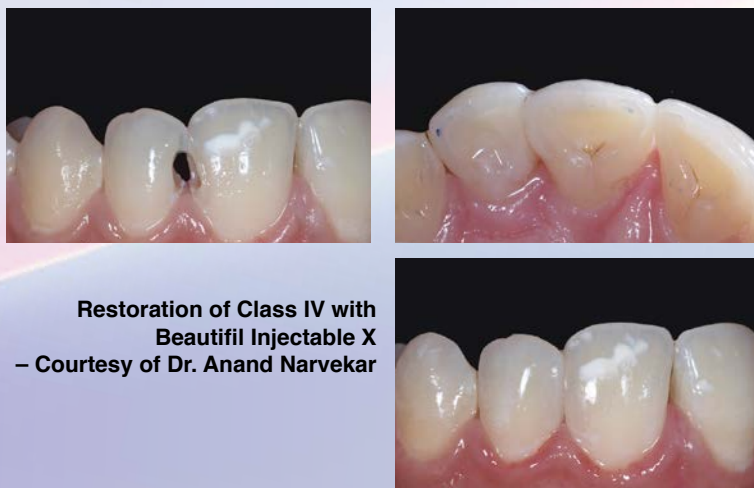
The proprietary bioactive nano S-PRG (Surface Pre-Reacted Glass ionomer) filler technology provides an optimal balance of light transmission / diffusion for a perfect shade match and bioactive benefits. The homogenous nano-filler complex facilitates an easy and lasting self-polishing natural gloss.



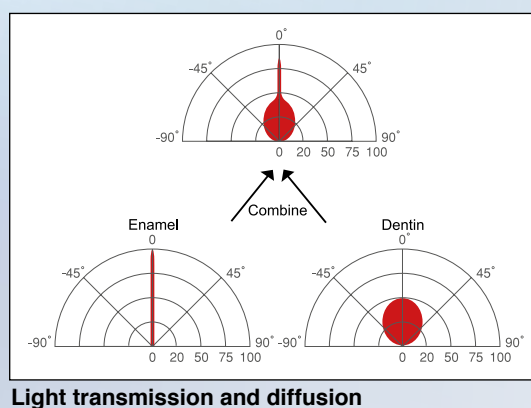
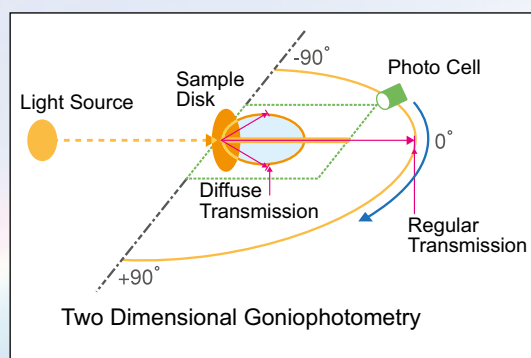
***S-PRG Filler Technology Imparts Bioactive Anti-plaque benefits**

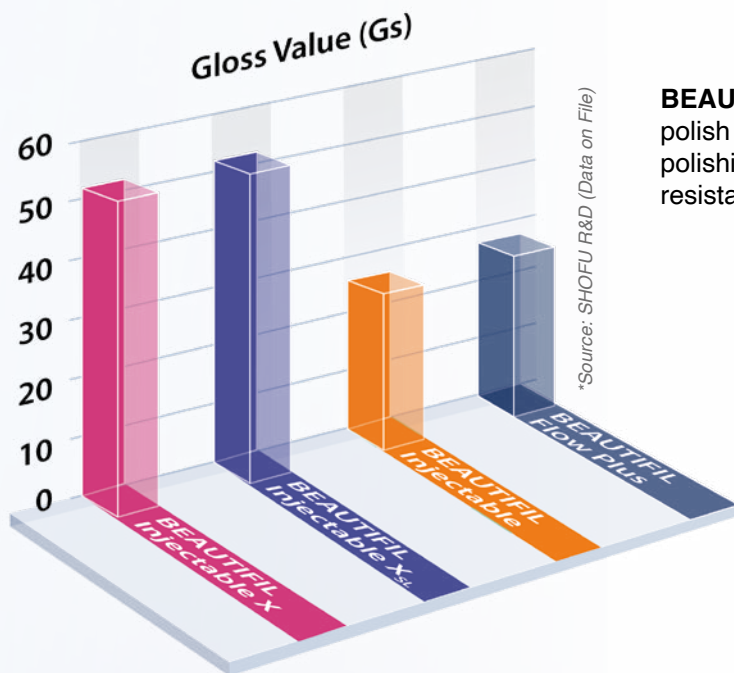
Exceptional Aesthetics that Last

BEAUTIFIL Injectable X exhibits a high level of natural aesthetics with life-like shades that merge seamlessly with natural tooth for invisible restorations. Shades are stable with no shift in translucency pre- and post-cure.



Restoration of Class IV with
Beautiful Injectable X
– Courtesy of Dr. Anand Narvekar

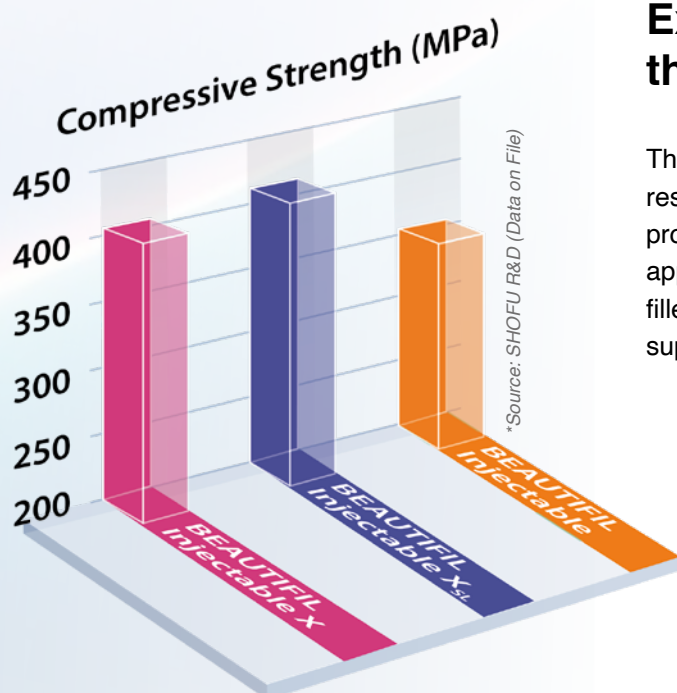




BEAUTIFIL Injectable X & X_{SL} exhibit effortless polish to an unparalleled natural luster with self-polishing ability for lasting aesthetics with higher stain resistance.



High gloss observed post-cure
(without polishing)



Exceptional Strength that Endures

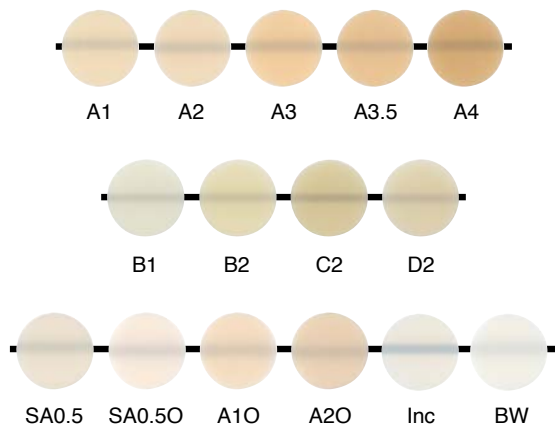
The novel nano-filler-silanization technology and resilient resin matrix imparts superior mechanical properties to Beautifil Injectable X, enabling universal application in all classes of cavities. Homogeneous filler particle dispersion assures greater longevity and superior hardness to withstand occlusal stress.



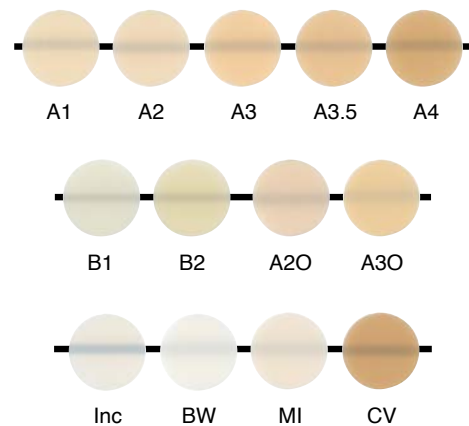
3 Levels of Opacity to meet all clinical needs

- Opaque shades to mimic deep dentin opacity
- Universal shades for universal application
- Universal enamel to simulate translucency of natural enamel

BEAUTIFIL Injectable X (15 shades)



BEAUTIFIL Injectable XSL (13 shades)



The shades A1-D2 correspond to the VITA* Classical Shades.

Inject as you shape



BEAUTIFIL Injectable X features “Inject as you Shape” stackable consistency to effortlessly create cusps, marginal ridges and conform to natural tooth anatomy.



Clinical Case

Restoration of multiple carious lesions in anterior aesthetic zone
– Photograph courtesy of Dr. Anand Narvekar



BEFORE



AFTER



PREPARE
with SHOFU Diamond Burs



INJECT
to restore



FINISH & POLISH
with OneGloss

Posterior Class II Restoration
– Photograph courtesy of Dr. Melvin Sia



BEFORE



AFTER



PREPARE
with Shofu Diamonds Burs



INJECT
to restore



FINISH & POLISH
with OneGloss

Order Information & Related Products

BEAUTIFIL Injectable X Syringe 2.2g

SHADE	REF
A1	Y2501
A2	Y2502
A3	Y2503
A3.5	Y2504
A4	Y2505
B1	Y2506
B2	Y2507
C2	Y2508
D2	Y2509
SA0.5	Y2500
SA0.50	Y2510
A10 (Opacious A1)	Y2511
A20 (Opacious A2)	Y2512
INC (Incisal)	Y2513
BW (Bleach White)	Y2514

BEAUTIFIL Injectable XsL Syringe 2.2g

SHADE	REF
A1	Y2521
A2	Y2522
A3	Y2523
A3.5	Y2524
A4	Y2525
B1	Y2526
B2	Y2527
A20 (Opacious A2)	Y2530
A30 (Opacious A3)	Y2531
CV	Y2535
MI	Y2534
INC (Incisal)	Y2532
BW (Bleach White)	Y2533



BeutiBond Xtreme Set [REF Y2448]



FL-BOND II Complete Set [REF 1306]



Super-Snap X-TREME
Technique Mini-Kit [REF N0509]



SILICONE One Gloss [REF 0171]



OneGloss Set [REF 0180]



Barrier Sleeves 50pcs [REF 2070]



Official Partner



SHOFU DENTAL ASIA-PACIFIC PTE. LTD.
1 Science Park Road, #01-01 / 02 The Capricorn, Science Park II,
Singapore 117528 Tel: (65) 6377 2722
eMail: mailbx@shofu.com.sg www.shofu.com.sg



BIX20241111