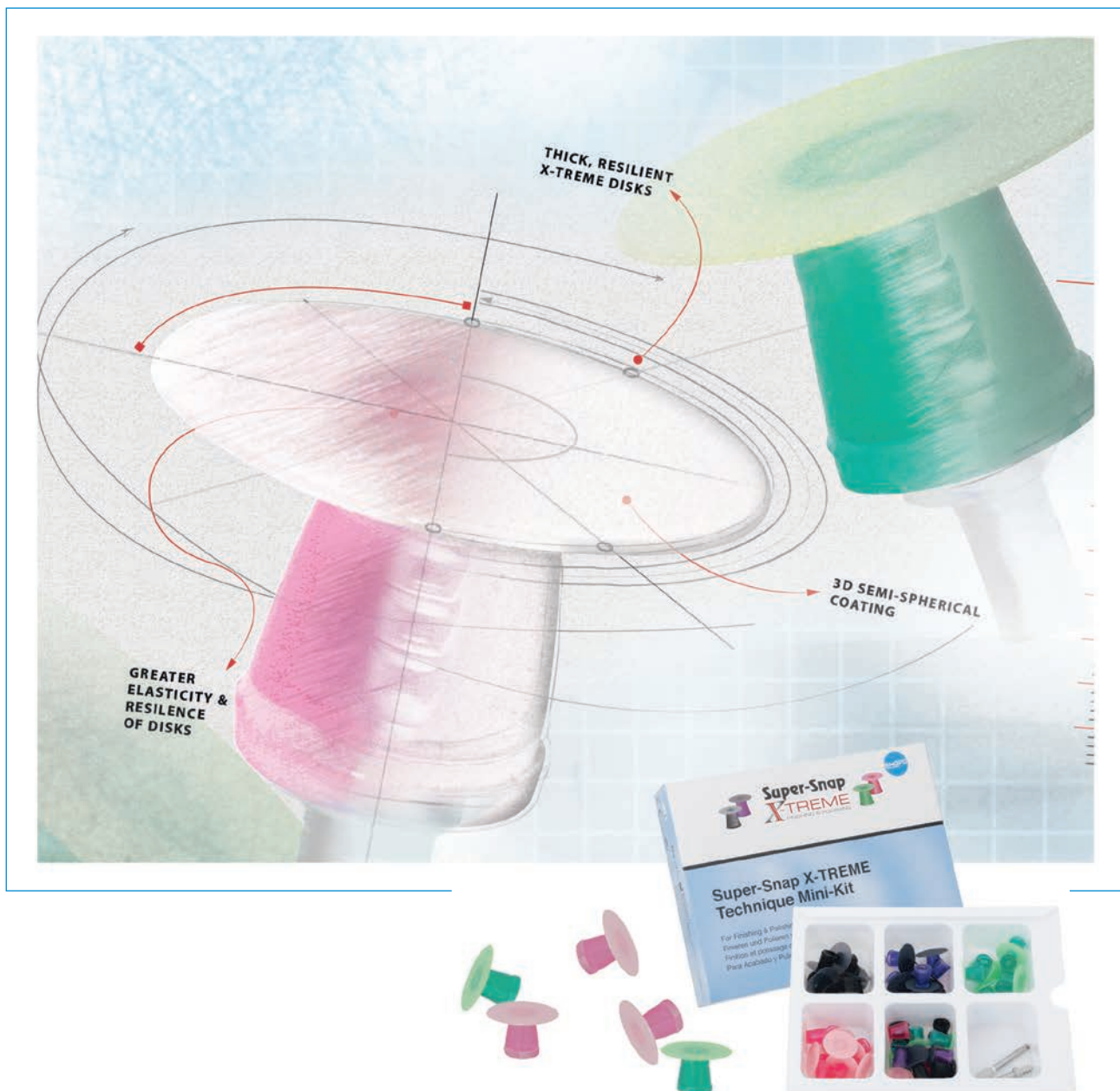


# Super-Snap X-TREME

FINISHING & POLISHING

Enhanced Polishing with 3D Coating Technology





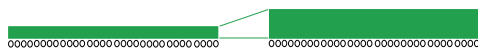
# POLISH to a **NATURAL** **LUSTRE** *in A SNAP...*

**Super-Snap X-TREME** is the latest enhancement to **Super-Snap** disks, created for you to easily achieve an exceptionally smooth surface with naturally lustrous polish on direct resin restorations. These new, aluminium oxide impregnated disks are designed with extra thickness to enable you to apply greater pressure while having the desired tactile feel.

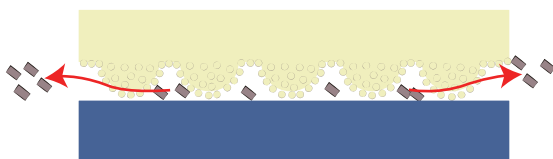
Advanced 3D coating technology imparts the finest **Super-Snap** (red) disk with a surface that polishes to a satiny gloss.



**3D Semi-spherical Coating**



**Thick, Resilient X-TREME Disks**



**3D Hemi-spherical Structure**



**Super-Snap X-TREME Disk Polishing (Fine)**



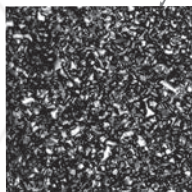
**Super-Snap X-TREME Disk Super-polishing (Superfine)**

## *Super-Snap X-TREME offers*

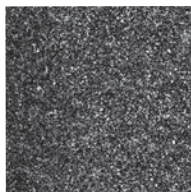
- Extra thickness offers better tactile feel for an enhanced polishing experience
- Greater elasticity and resilience of the disks facilitate easy polishing in interproximal areas
- Advanced 3D architecture with extra aluminium oxide coating in the Superfine red disks imparts a natural gloss and exceptionally smooth surface
- Improves polishing efficiency

FLEXIBLE

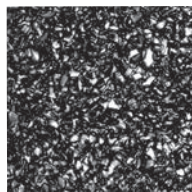
## Super-Snap Disk Surface x 400



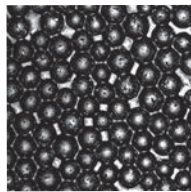
**Super-Snap  
Green Disk**



**Super-Snap  
Red Disk**

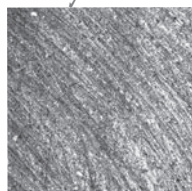


**Super-Snap  
X-TREME  
Green Disk**

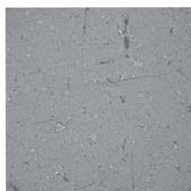


**Super-Snap  
X-TREME  
Red Disk**

## Composite Surface x 400



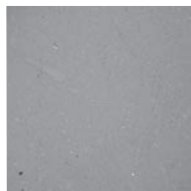
**Before Polishing**



**Current  
Super-Snap**

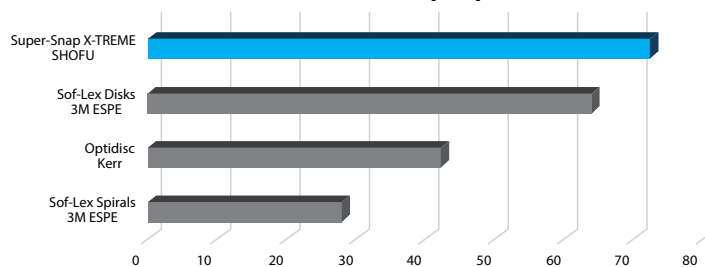


**With X-TREME  
Disks**

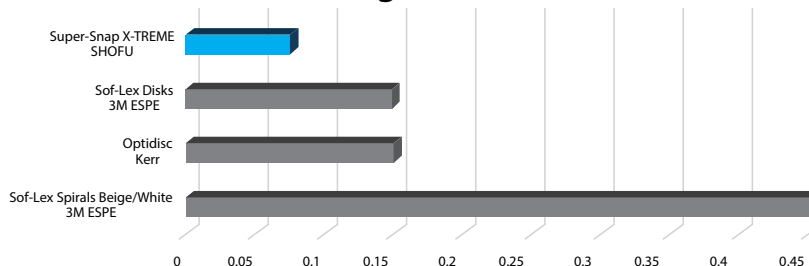


**Diamond Paste**

## Gloss Level (Gs)



## Surface Roughness (Ra)



**\*Test Results – SHOFU R&D**

## Proven Track Record

**Super-Snap**, the proven 4-step, disposable disk system, enables hassle-free, safe and efficient contouring, finishing and polishing of all direct aesthetic resins. Impregnated either with silicon carbide or aluminium oxide abrasive grits, these disks are designed free of a metal center to completely eliminate the risk of blemishes or discoloration on the restoration surface. A unique Christmas-tree shaped mandrel head locks in the resilient mount for better control while allowing users to easily change to a lower grit disk during sequential polishing.

## Attributes

- **Super-Snap** disks come in 4 different grits colour coded by grit size:
  - Course Black: Contouring
  - Medium Violet: Finishing
  - Fine Green: Polishing
  - Superfine Red: Super-polishing
- 2 Sizes: Regular 12 mm & Mini 8 mm diameter disks
- **Super-Snap** disks are ultra-thin yet resilient to easily reach interproximal areas while allowing excellent visibility of the surfaces being polished
- **Super-Snap** disks have a soft, safe, snap-on shank mount for easy placement of mandrels
- Unlike disks with metal centers, **Super-Snap** disks completely eliminate the risk of gouging restorations
- Promotes infection control in the operatory with disposable disks





# Super-Snap Polishing System

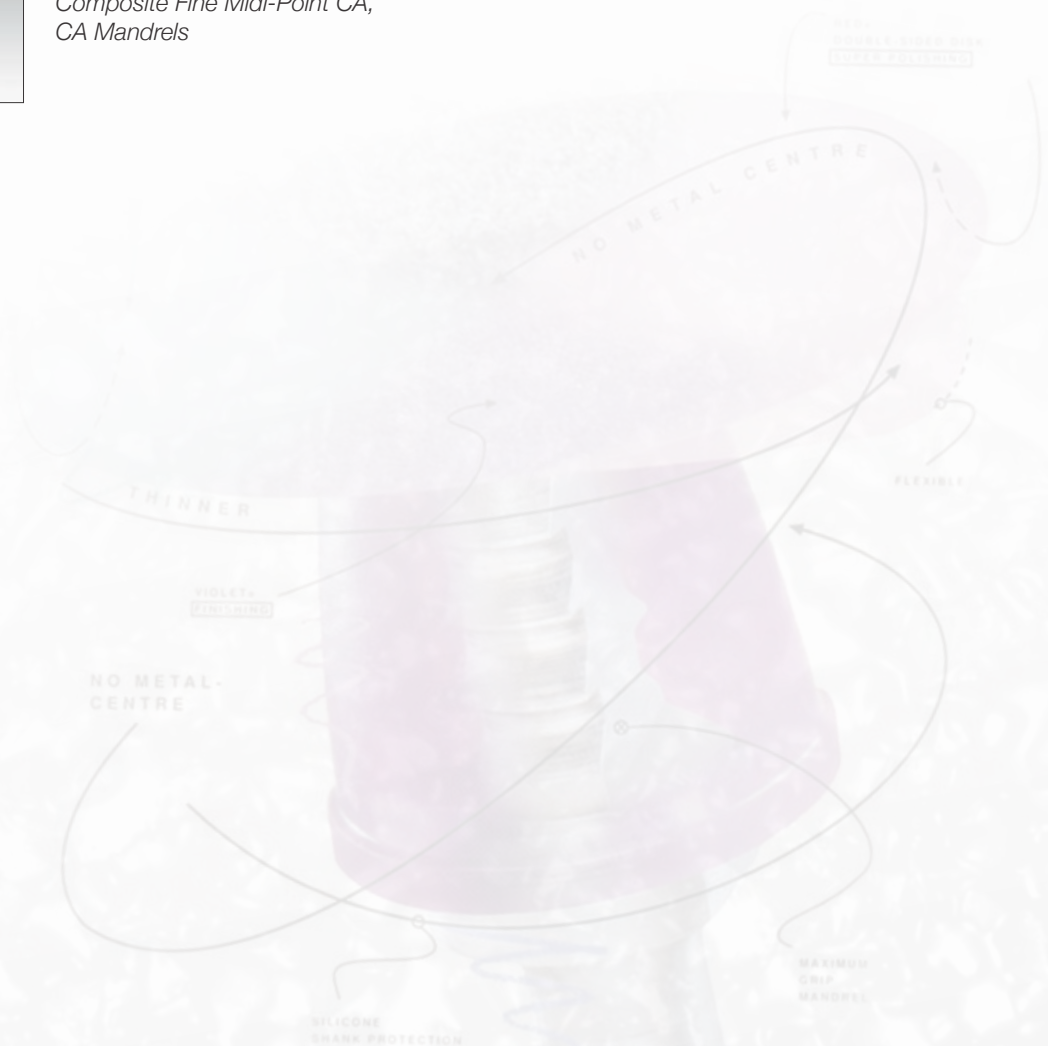
	Contouring (Super-Snap)		Finishing (Super-Snap)				Polishing (Super-Snap X-treme)		Super-Polishing (Super-Snap X-treme)	
Shape Category										
	Black (Coarse)		Violet (Medium)				Green (Fine)		Red (Super Fine)	
Refills (50's a box)	L506	L507	L508	L509	L528	L522	L511	L531	L512	L532

## Order Information



### Super-Snap X-TREME Technique Mini Kit [REF N0509]

48 x standard disks,  
Composite Fine Midi-Point CA,  
CA Mandrels



#### SHOFU DENTAL ASIA-PACIFIC PTE. LTD.

1 Science Park Road, #01-01 / 02 The Capricorn, Singapore Science Park II,  
Singapore 117528 Tel: (65) 6377 2722  
eMail: mailbx@shofu.com.sg www.shofu.com.sg



SSX20230930