

# BeautiBond **X**treme

The Extremely Effective Universal Adhesive



# The Extremely Dependable Universal Adhesive



**BeautiBond Xtreme** is an all-in one, truly universal adhesive for bonding direct and indirect restorations. A single application on the restoration surface assures a strong, fast and reliable adhesion to a multitude of substrates, without the need of additional primers. The HEMA-free formulation enables easy removal of solvents, eliminates risk of allergies and bond hydrolysis, assuring a stable bond.

No compromises on technique or steep learning curves!

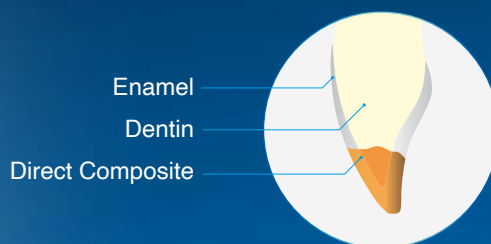
The choice is yours: Self-Etch, Selective-Etch, or Total-Etch. **BeautiBond Xtreme** offers the flexibility to bond restorations in a way that suits your daily workflow.

## Harnessing The “Power of ONE”

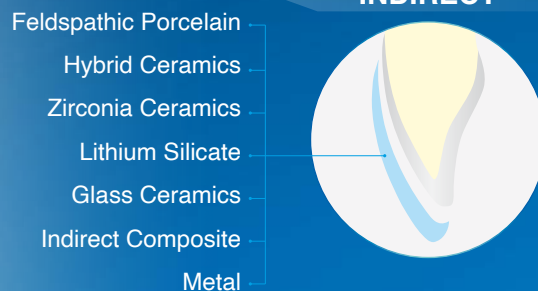
*Universal Adhesive that bonds  
to all restorative substrates*



### DIRECT



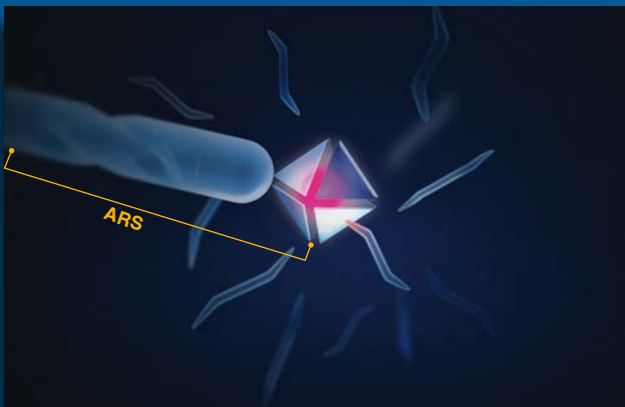
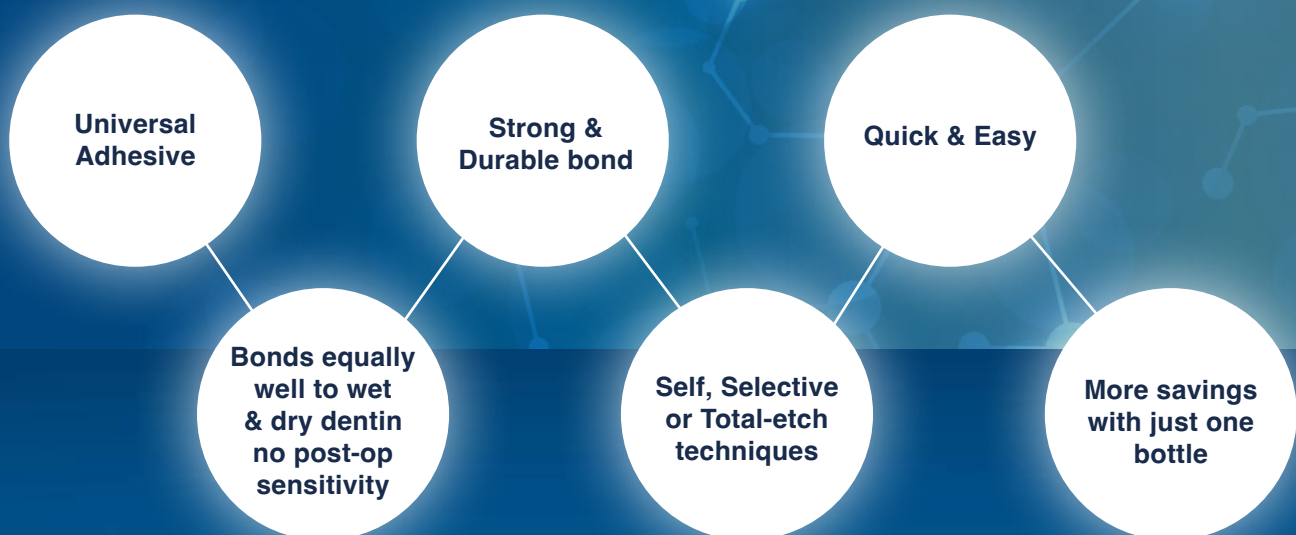
### INDIRECT



- Greater Bond Stability
- Predictable adhesion to Glass Ceramics, Feldspathic Porcelain & Lithium Silicate restorations

## **QUADRA-FUNCTIONAL MONOMER** Technology

*Featuring Novel ARS & Phosphate ester monomers*



Acid Resistance Silane coupling agent (ARS) is developed with a protective module that prevents monomer degradation.

The module detaches when the concentration of acidic monomers increases only upon drying of adhesive.

The freshly activated ARS agent warrants an optimal bond with ceramic restorations preventing degradation even with prolonged storage.



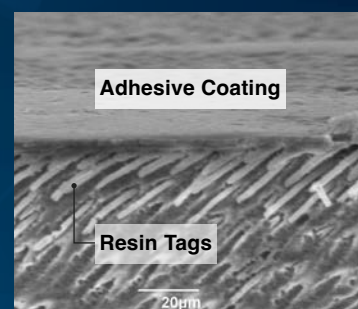
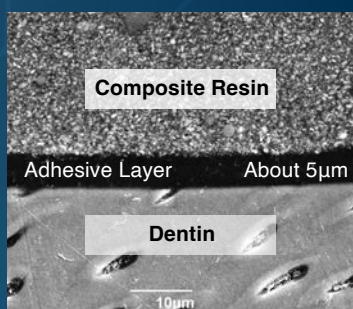
Special nozzle design ensures controlled dispensing with minimal wastage. **BeautiBond Xtreme** is not technique sensitive as the homogeneous formulation exhibits ideal viscosity for easy application and drying, without leaving any residual solvent.

**BeautiBond Xtreme** is stable and allows easy storage at room temperature @ 1-25 °C



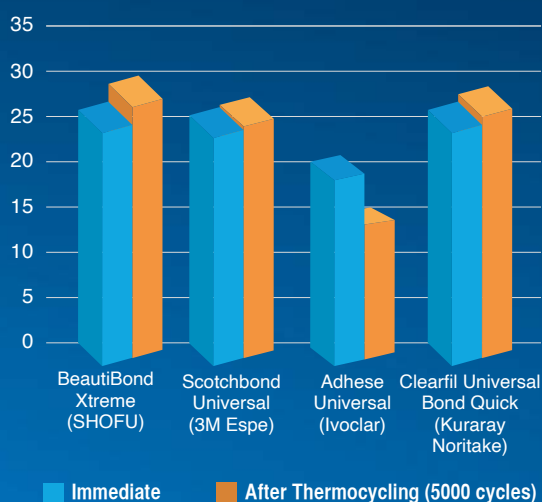
## SAFE & RELIABLE ADHESION

**BeautiBond Xtreme** ensures predictable adhesion with a thin, uniform bonding layer of 5 microns. The novel bond provides an optimal seal with deep penetration of dentinal tubules to create resin tags for a secure interlocking network, eliminating the risk of post-op sensitivity and protecting against microleakage.

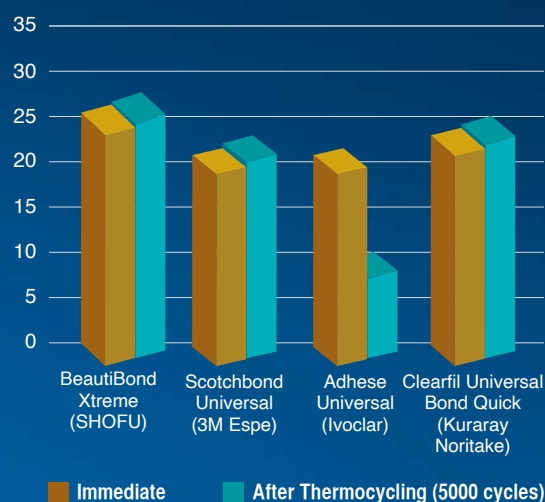


SEM Image of Tooth-Restoration Interphase

Shear Bond Strength - DENTIN  
(self-etch mode)



Shear Bond Strength - ENAMEL  
(self-etch mode)



\*Source: SHOFU R&D (Data on file).

# Clinical Applications



## Replacement of Metal Inlay



Metal Inlay



Application of **BeautiBond Xtreme** (self-etch technique)



Final restoration with Beautifil Injectable X

*Case courtesy of Professor Keiichi Hosaka, Department of Regenerative Dental Medicine, Tokushima University Graduate School of Biomedical Sciences*

## 3 Simple Steps to Durable Adhesion...



### Step 1 Apply the adhesive

Rub for 20 sec. if the tooth surface is etched with phosphoric acid.



### Step 2 Air dry Gentle air → Strong air

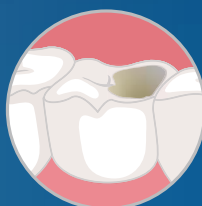
Repeat step 1 and 2 if the adhesive surface does not have a glossy uniform appearance after air drying.



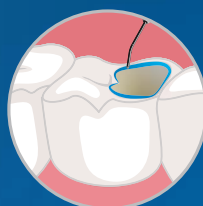
### Step 3 Light-cure

LED light: 5 sec.  
Halogen Light: 10 sec.

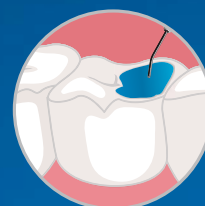
*Suits Your Preferred Etching Technique...*



SELF-ETCH



SELECTIVE-ETCH



TOTAL-ETCH

# Order Information



**BeautiBond Xtreme Set [REF Y2448]**  
(5ml bottle, Micro brush 50's, V dish 25's)

## Related Products

### Direct Restoration:



**BEAUTIFIL II Syringe 4.5g**



**BEAUTIFIL II LS Syringe 4g**



**BEAUTIFIL Injectable X/XSL Syringe 2.2g**

### Cementation of Indirect Restoration:



**BeautiCem SA – Auto Mixing Syringe 5ml Clear [REF 3213]**



**ResiCem Refill Pack Clear [REF 3221]**

Official Partner



**SHOFU DENTAL ASIA-PACIFIC PTE. LTD.**  
1 Science Park Road, #01-01 / 02 The Capricorn, Science Park II,  
Singapore 117528 Tel: (65) 6377 2722  
eMail: mailbx@shofu.com.sg www.shofu.com.sg



BBX20230930