



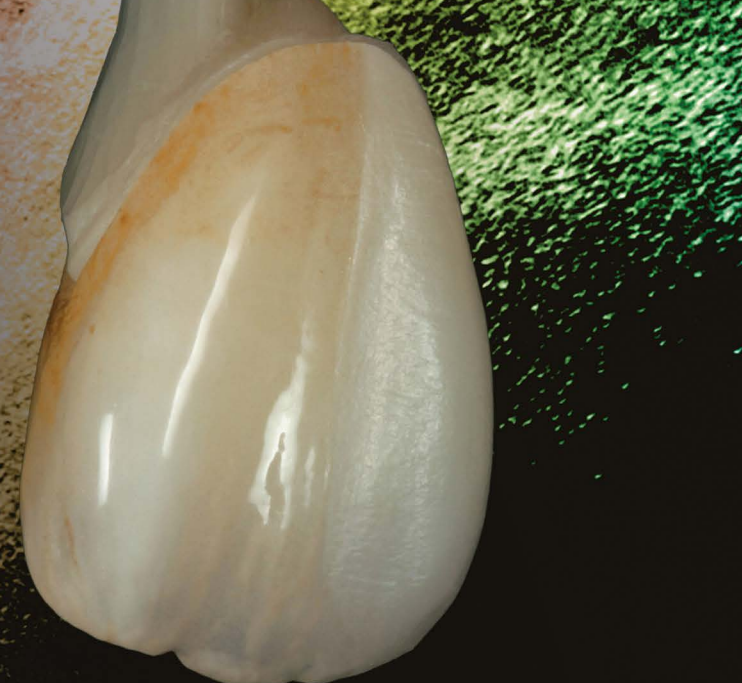
Universal

Stain Like a Master

Technique Guide – *Case 1*

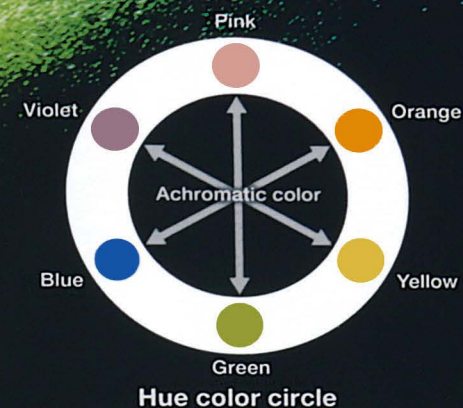
Copyright © SHOFU DENTAL ASIA-PACIFIC PTE. LTD.

All rights reserved.



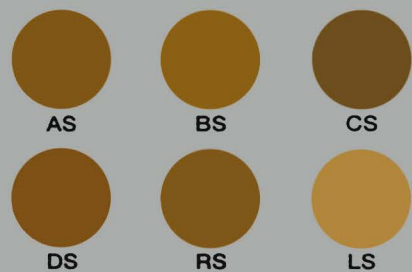
Base Stain

Basic shade adjustment and characterization are performed with these colors.



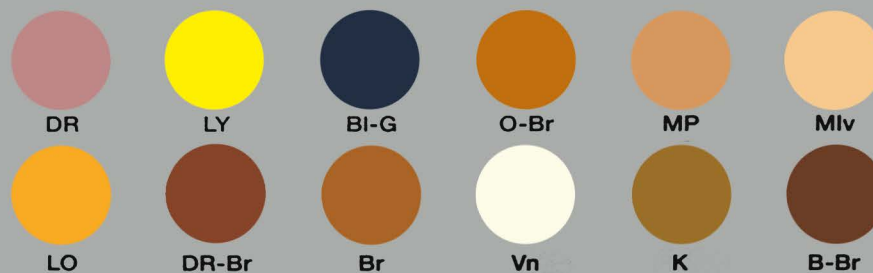
Shade Stain

Shade intensity can be controlled with these materials.

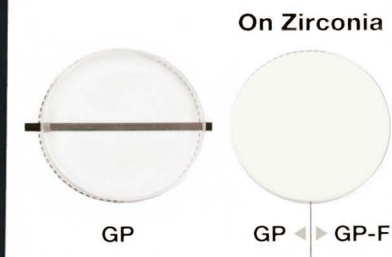


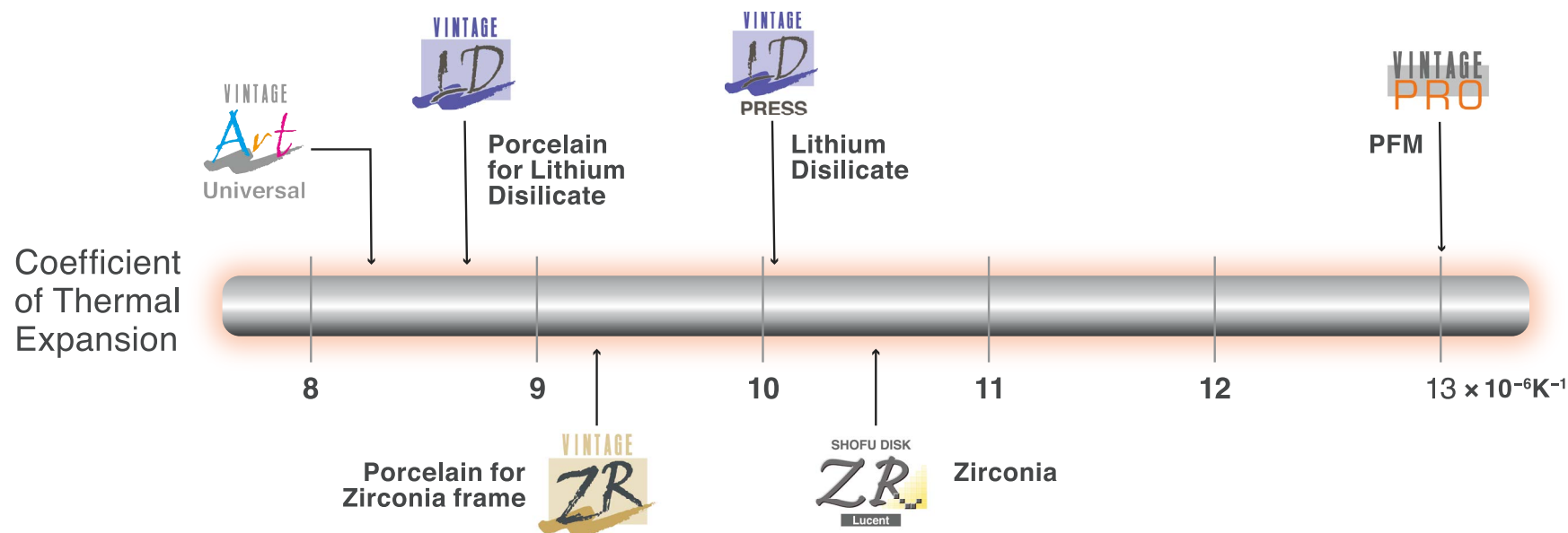
Color Stain

Due to extensive color lineup, desired shade can be obtained easily without complicated mixing.



Glazing Powder







Before



After



A Shade



Blue Gray



Blue



Violet

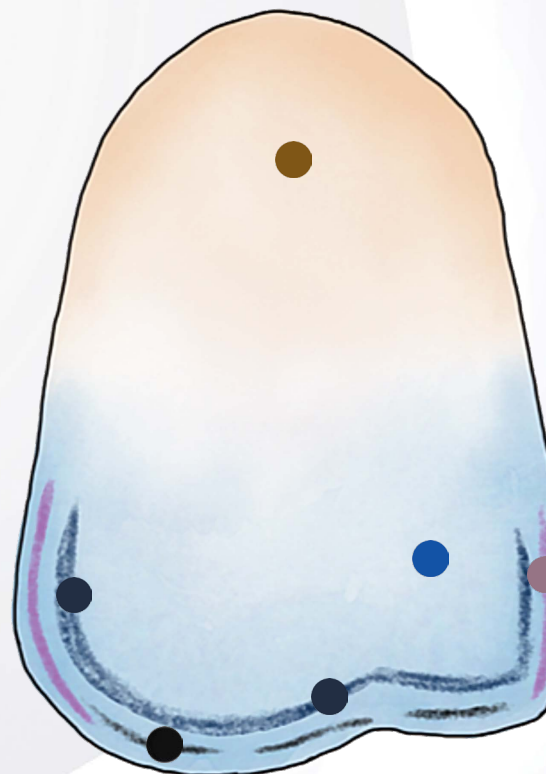


Black



Glazing Powder
Fluorescence

-  A Shade (AS)
-  Blue (BI)
-  Violet (V)
-  Blue Grey (BI-G)
-  Black (B)
-  Glazing Powder-Fluorescence (GP-F)



A Shade



Blue Gray



Blue



Violet



Black



Glazing Powder
Fluorescence

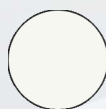


Mixing Ratio 1:1

Apply at cervical area



AS



GP-F



A Shade



Glazing Powder
Fluorescence



Blue

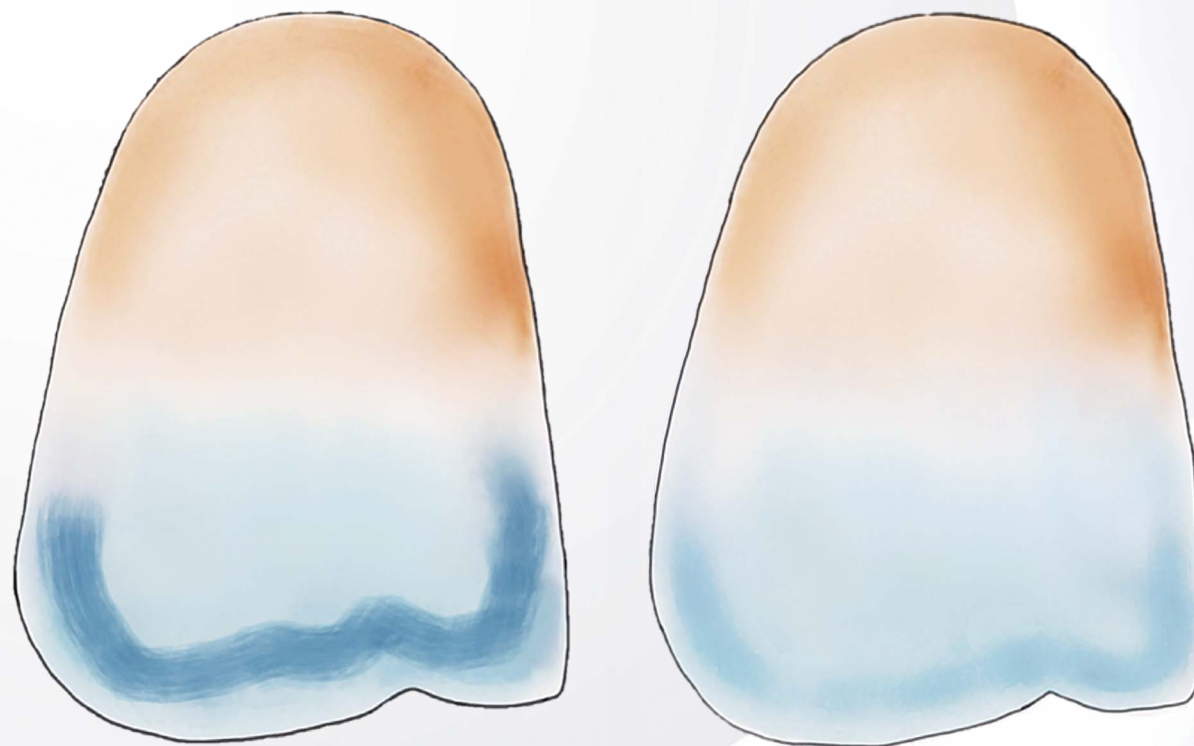
Apply at incisal area



BI



GP-F



Apply at incisal area & blend, Mixing Ratio 1:1



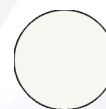
BI-G



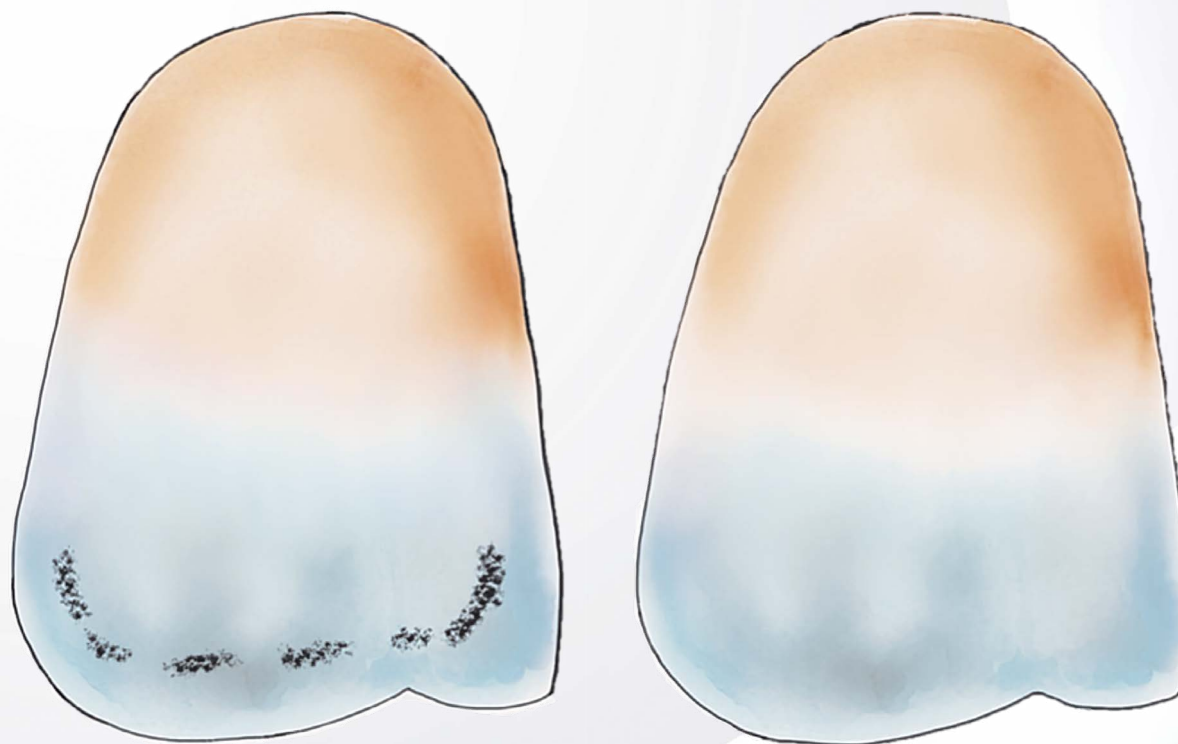
Blue Gray



Glazing Powder
Fluorescence



GP-F



Apply at the incisal area & blend, Mixing Ratio 1:1



B



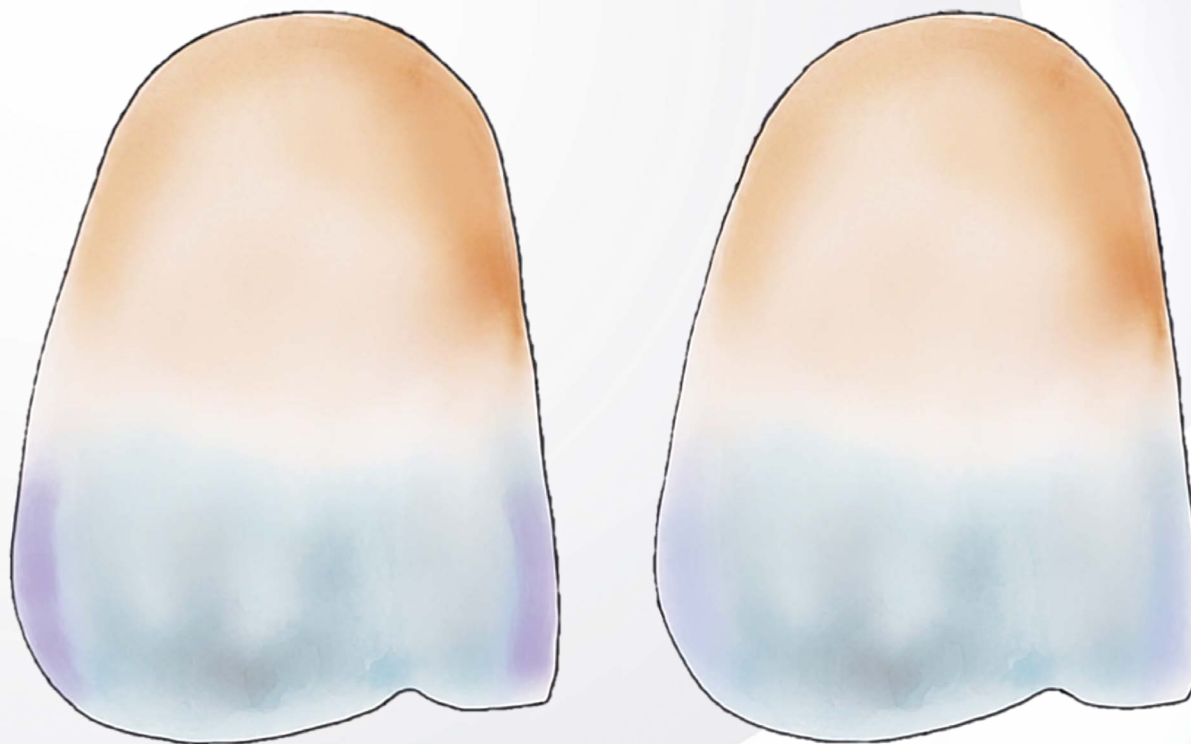
Black



Glazing Powder
Fluorescence



GP-F



Apply at mesial and distal area & blend, Mixing Ratio 1:1



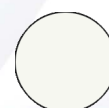
V



Violet



Glazing Powder
Fluorescence



GP-F

- A Shade (AS)
- Blue (Bl)
- Violet (V)
- Blue Grey (Bl-G)
- Black (B)
- Glazing Powder-Fluorescence (GP-F)

