



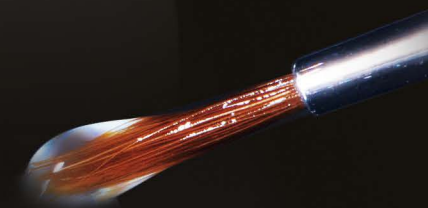
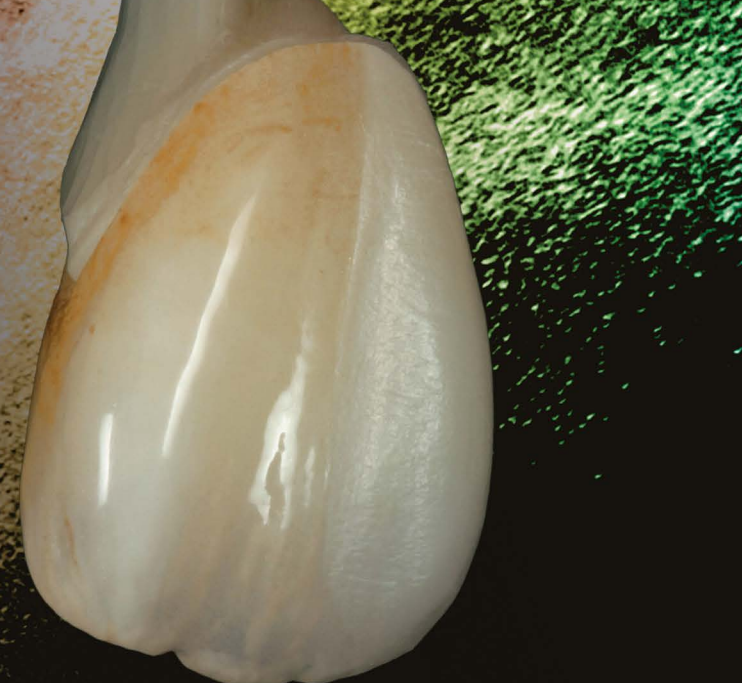
Universal

Stain Like a Master

Technique Guide – *Case 3*

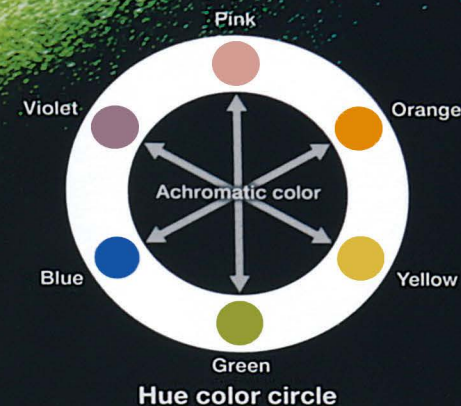
Copyright © SHOFU DENTAL ASIA-PACIFIC PTE. LTD.

All rights reserved.



Base Stain

Basic shade adjustment and characterization are performed with these colors.



Shade Stain

Shade intensity can be controlled with these materials.



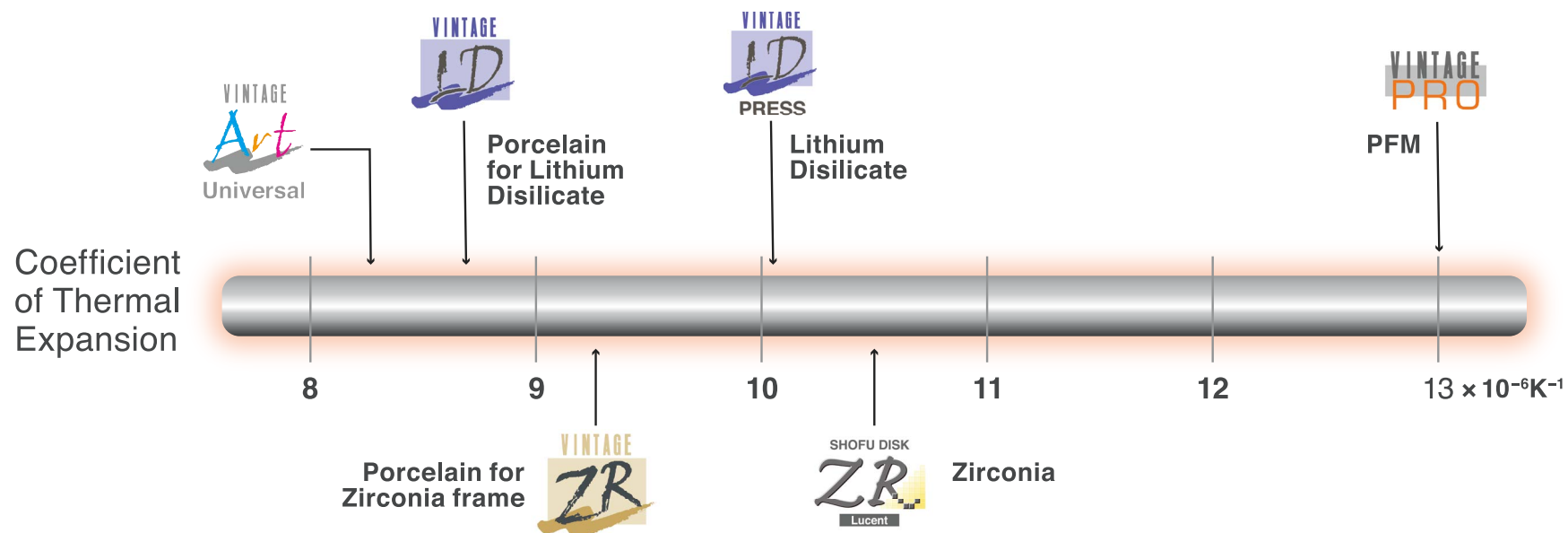
Color Stain

Due to extensive color lineup, desired shade can be obtained easily without complicated mixing.



Glazing Powder







Before



After



A Shade



Blue Gray



Blue



Dark Red Brown








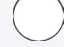
White

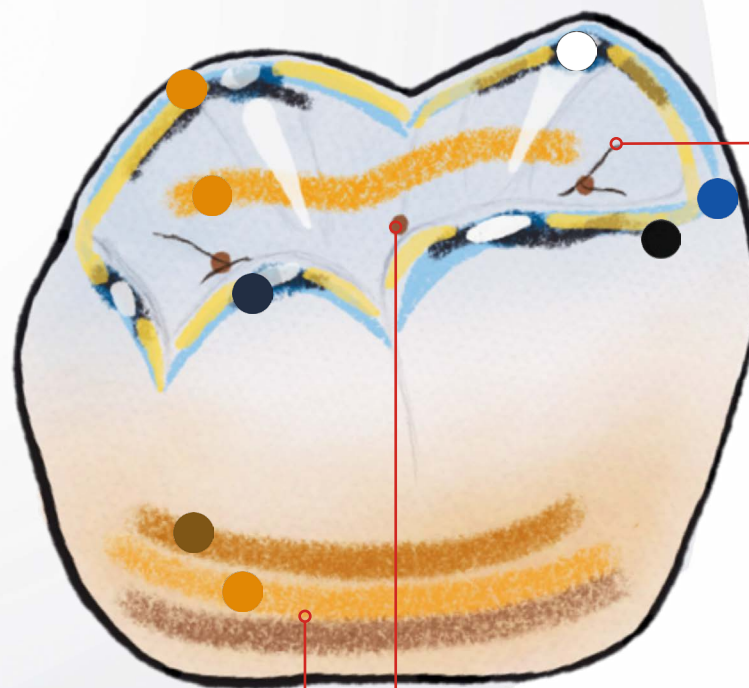



Black



Glazing Powder
Fluorescence

-  A Shade (AS)
-  Blue (BI)
-  Orange (O)
-  Dark Red Brown (DR-Br)
-  Blue Grey (BI-G)
-  Black (B)
-  White (W)
-  Glazing Powder-Fluorescence (GP-F)



 B DR-Br
Mixing Ratio 1:1

 AS O DR-Br
Mixing Ratio 1:1:1



A Shade



Blue Gray



Blue



Dark Red Brown



White



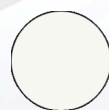
Black



Glazing Powder
Fluorescence



Apply on entire crown surface



GP-F



Glazing Powder
Fluorescence



Apply at cervical area & blend



AS



A Shade



Apply at cervical area & blend



Orange



Apply at occlusal area & blend



Orange



Apply at cervical area & blend, Mixing Ratio 1:1:1



AS



A Shade



O



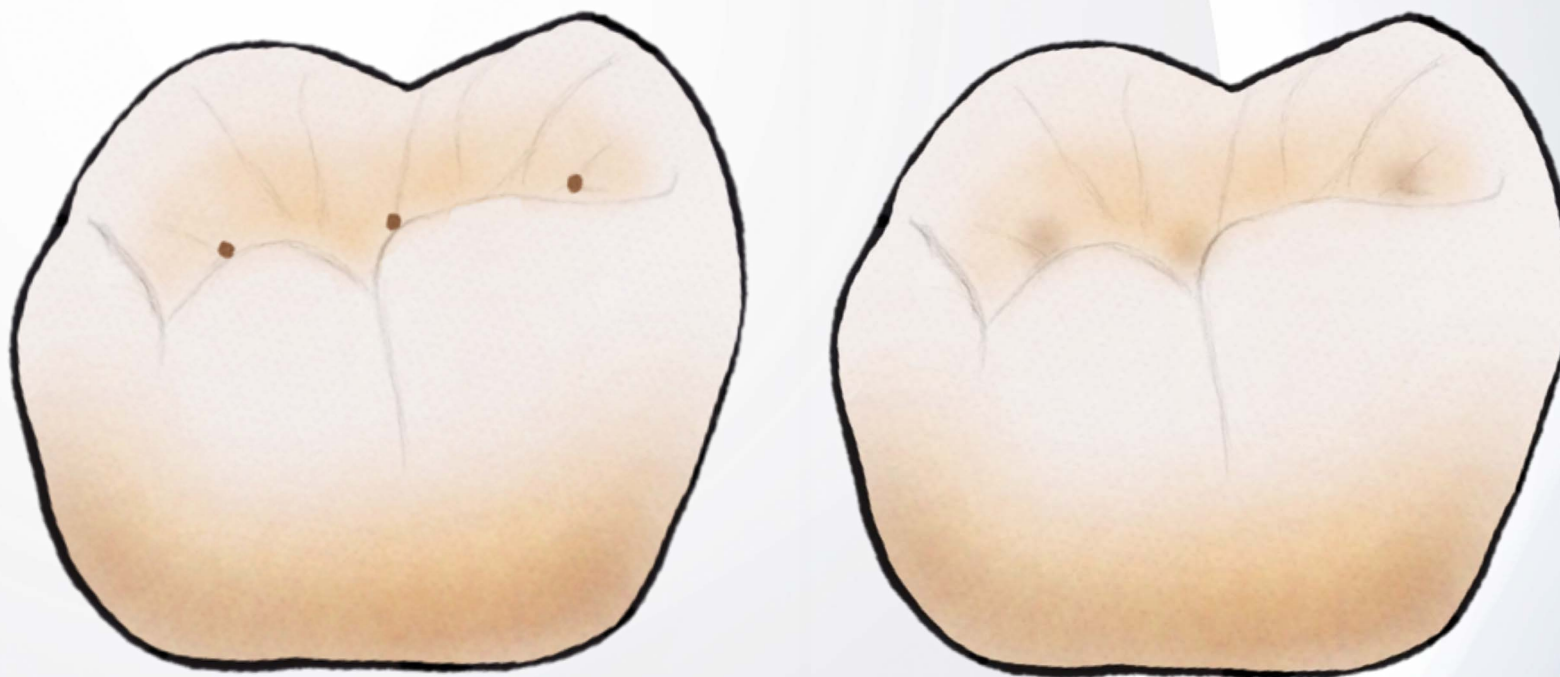
Orange



DR-Br



Dark Red Brown



Apply at occlusal pits & blend, Mixing Ratio 1:1:1



AS



A Shade



O



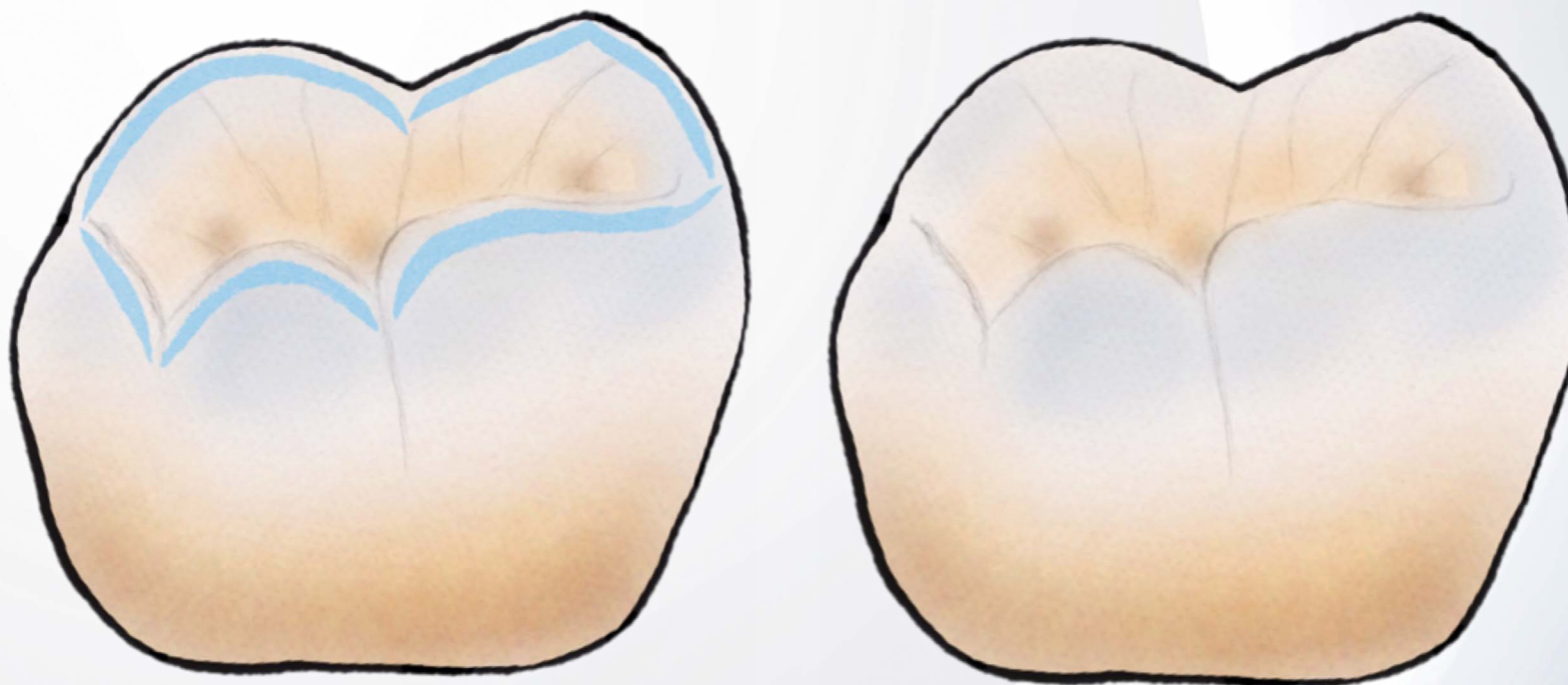
Orange



DR-Br



Dark Red Brown



Apply on occlusal cusps & blend, Mixing Ratio 1:1



BI



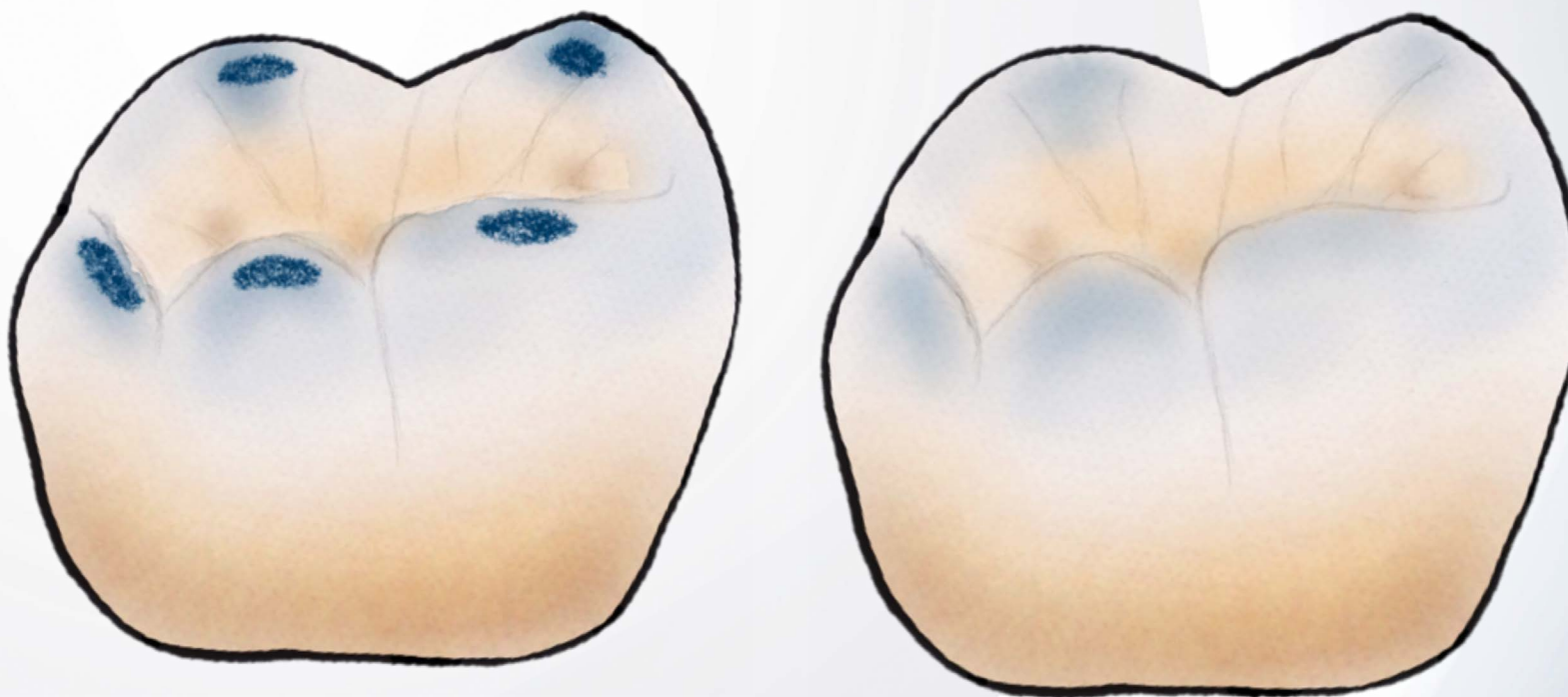
Blue



Glazing Powder
Fluorescence



GP-F



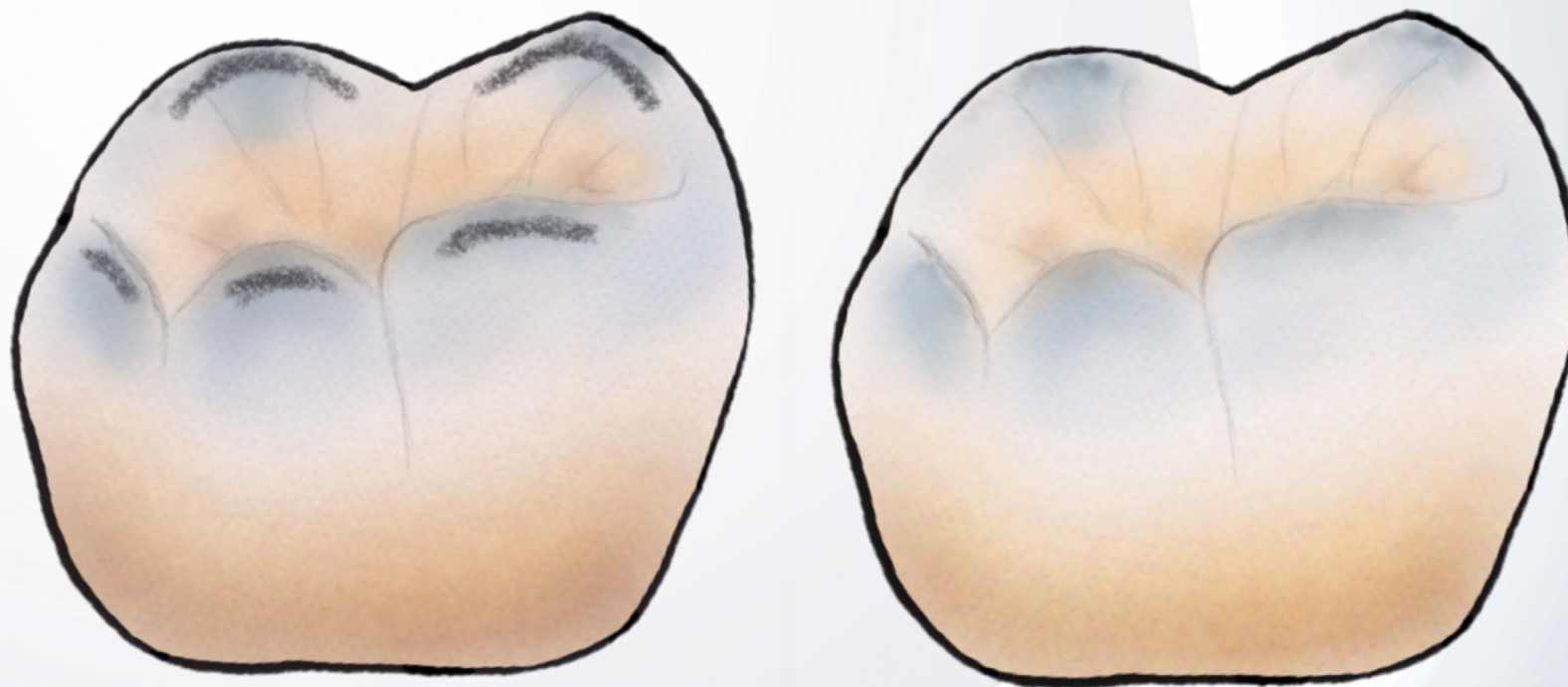
Apply at occlusal cusp tips & blend



BI-G



Blue Gray



Apply at occlusal cusp tips & blend, Mixing Ratio 1:1



B



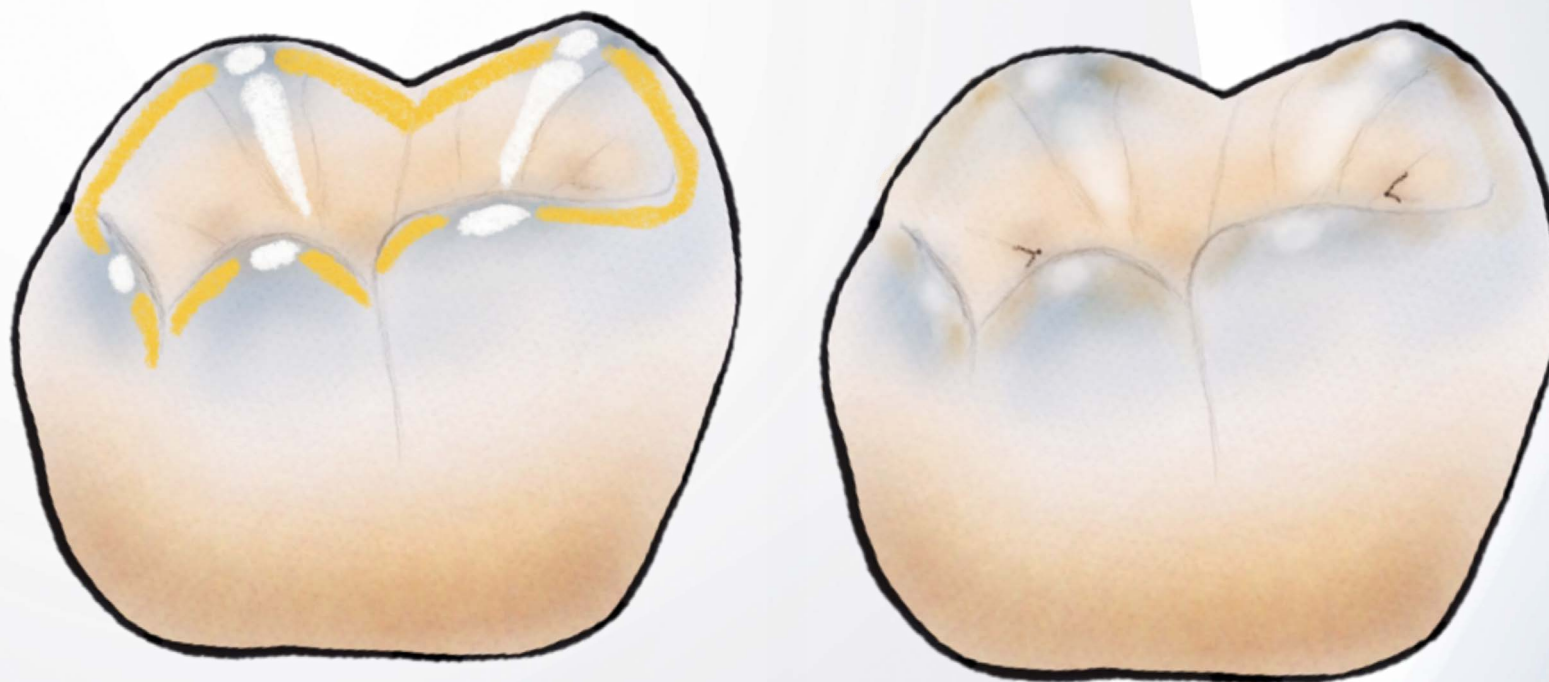
Black



Glazing Powder
Fluorescence



GP-F



Apply O & W on cusp tips, inclines and ridges

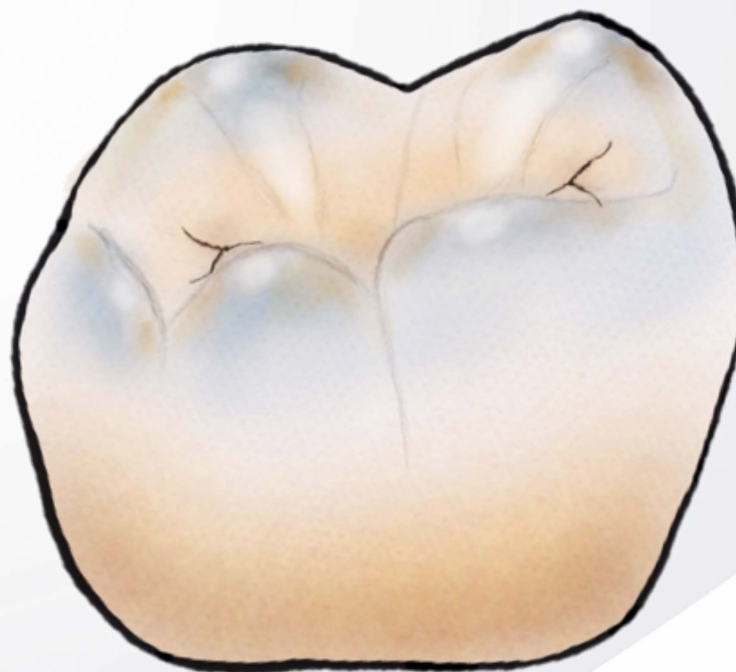


Orange



White





Apply at occlusal tips and grooves, Mixing Ratio 1:1



B



Black



DR-Br



Dark Red Brown

-  A Shade (AS)
-  Blue (BI)
-  Orange (O)
-  Dark Red Brown (DR-Br)
-  Blue Grey (BI-G)
-  Black (B)
-  White (W)
-  Glazing Powder-Fluorescence (GP-F)

