

# AI-INSTA

AI-Aided CAD/CAM

CLICK / SCAN



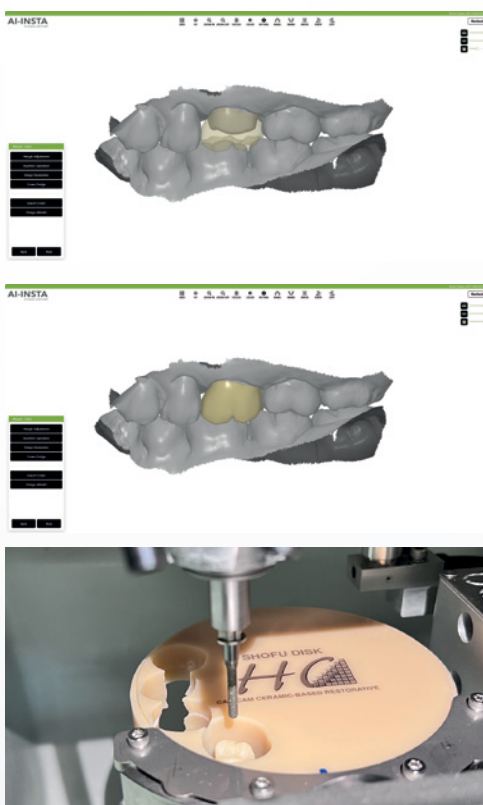
FOR MORE INFO

## AI-POWERED DIGITAL SOLUTION FOR RESTORATIONS WITHIN AN HOUR

Designed for Chairside Same Day Dentistry with Precision, Reliability, Speed & Consistency.



**Order Information:**  
AI-INSTA [REF MST001]



### FEATURES

- ✓ Compact, 5 Axis monoblock body design with exceptional rigidity, stability and accuracy
- ✓ Intuitive, user-friendly User Interface (UI)
- ✓ Offers Wet/Dry milling options for hybrid ceramics, glass ceramics, zirconia and PMMA
- ✓ Seamless with Fast, High-Quality Output for same day restorations with Hybrid ceramics
- ✓ Robust & Rigid structure validated by FEM Analysis
- ✓ AI Powered, Cloud-based Plug & Play CAD design- automatically creates individualized restoration with option for fine manual adjustments
- ✓ AI integrated Manufacturing CAM for auto-nesting & a seamless milling strategy
- ✓ Fast & Predictable fabrication of crowns, inlays, onlays, or veneers can be fabricated within one hour.

### TECHNICAL SPECIFICATIONS

<b>Milling Types</b>	Dry & Wet
<b>W*D*H</b>	500 × 710 × 690 mm
<b>Weight</b>	85KG
<b>Precision</b>	±10μm
<b>Spindle Speed</b>	10,000~80,000 RPM
<b>Spindle Power</b>	DC 500W
<b>Voltage</b>	220-240 VAC, 50/60Hz, 15A
<b>Pressure</b>	6-8KG/CM <sup>3</sup> (0.6-0.8MPa, 4HP)
<b>Rotary B axis angle</b>	0 ~ 360°
<b>Rotary A axis angle</b>	+90°~ -35°
<b>Material</b>	<ul style="list-style-type: none"> <li>• Hybrid Ceramic</li> <li>• Glass Ceramic</li> <li>• Zirconia</li> <li>• PMMA</li> </ul>

